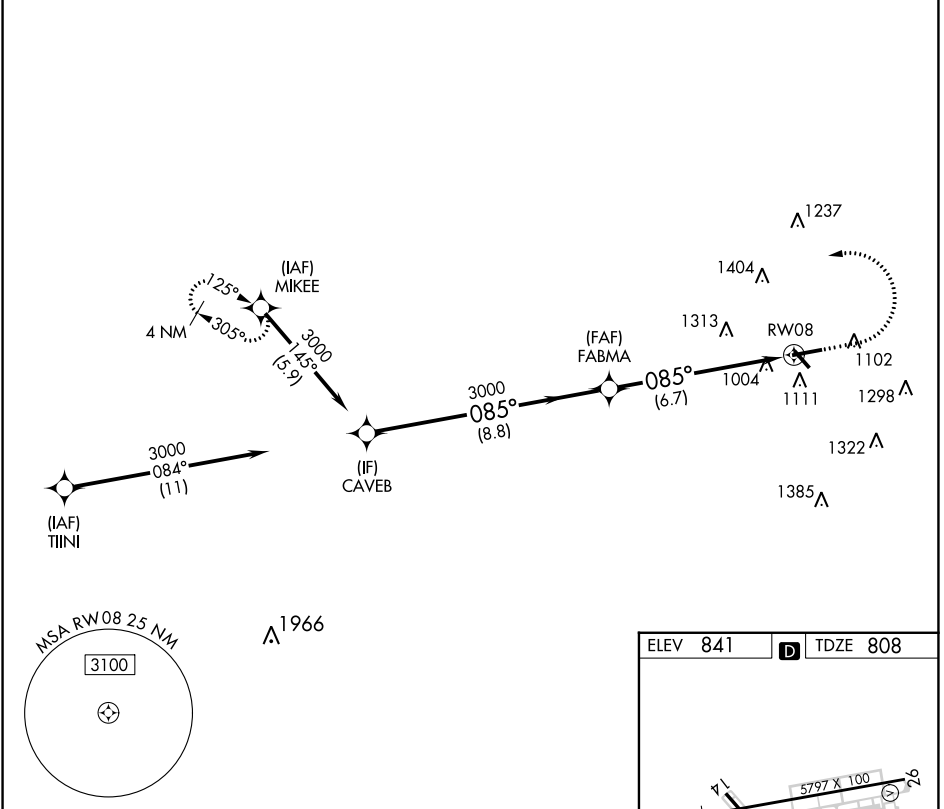


APP CRS	Rwy Idg	<b>5797</b>
<b>085°</b>	TDZE	<b>808</b>
	Apt Elev	<b>841</b>

# RNAV (RNP) Z RWY 8

FULTON COUNTY EXEC/CHARLIE BROWN FLD (F'TY)

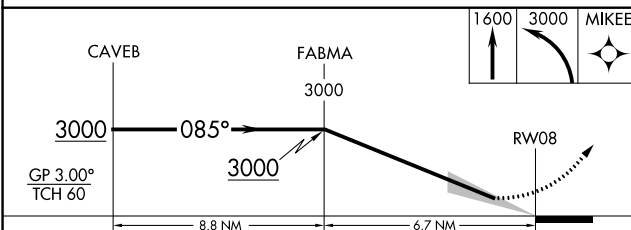
RNP AR APCH.		MALS R	MISSED APPROACH: Climb to 1600 then climbing left turn to 3000 direct MIKEE and hold.
<p>▼ For uncompensated Baro-VNAV systems, procedure NA below -11°C or above 54°C. Ridge with trees to 1299' MSL between FAF and runway threshold may be obscured by clouds even with airfield ceiling at or above procedure minimums.</p>			
ATIS	ATLANTA APP CON	FULTON COUNTY TOWER	GND CON
<b>120.175</b>	<b>121.0 268.7</b>	<b>118.45 257.8</b>	<b>121.7 348.6</b>



SE-4, 08 AUG 2024 to 05 SEP 2024

SE-4, 08 AUG 2024 to 05 SEP 2024

ELEV 841	<b>D</b> TDZE 808
----------	-------------------



CATEGORY	A	B	C	D
RNP 0.30 DA		1401-1¼	593 (600-1¼)	

## AUTHORIZATION REQUIRED

HIRL Rwy 8-26  
REIL Rws 14, 26