

APP CRS	Rwy Idg	<b>6295</b>
<b>214°</b>	TDZE	<b>118</b>
	Apt Elev	<b>152</b>

# RNAV (RNP) Z RWY 21

LIHUE (LIH)(PHLI)

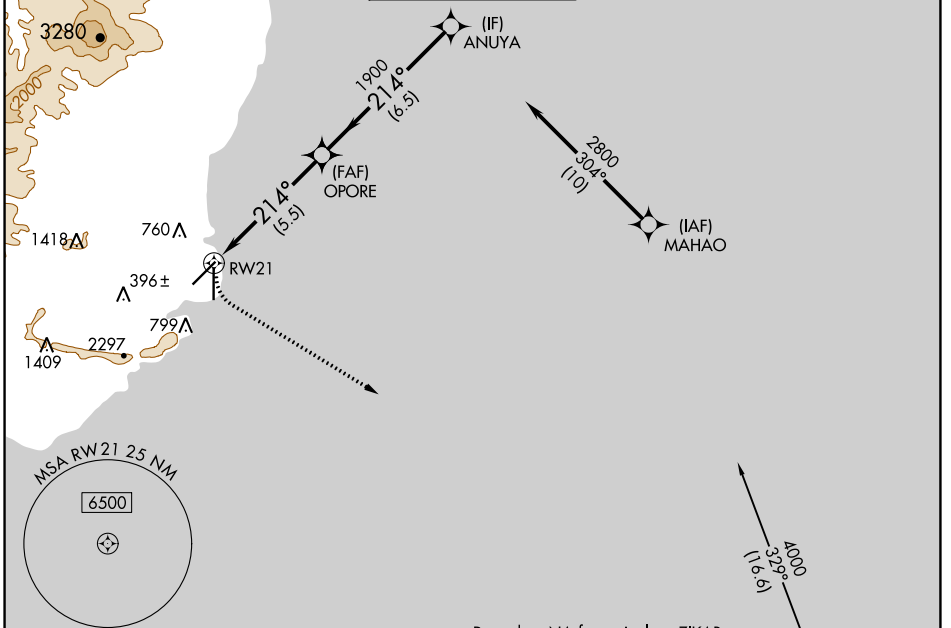
RNP AR APCH-GPS.

**▼** For uncompensated Baro-VNAV systems, procedure NA below 15°C or above 54°C.

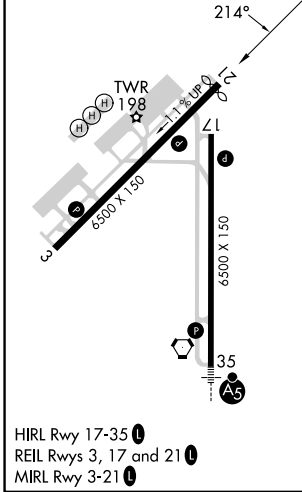
**▲** MISSED APPROACH: Climbing left turn to 3000 direct ZIKAB and hold. \*Missed approach requires minimum climb of 350 feet per NM to 2500.

MISSED APPROACH: Climbing left turn to 3000 direct ZIKAB and hold.  
\*Missed approach requires minimum climb of 350 feet per NM to 2500.

ATIS <b>127.2</b>	HCF CENTER <b>126.5 269.4</b>	LIHUE TOWER* <b>118.9(CTAF) 263.1</b>	GND CON <b>121.9</b>	CLNC DEL <b>126.5 269.4</b> (When twr closed)
----------------------	----------------------------------	--	-------------------------	---



ELEV 152	<b>D</b>	TDZE 118
----------	----------	----------



3000	ZIKAB	VGSI and RNAV glidepath not coincident (VGSI Angle 3.00/TCH 45).	ANUYA	2800
			OPORE	1900
	RW21			1900
				GP 3.00°
				TCH 52

CATEGORY	A	B	C	D
RNP 0.30 DA*	663-2 545 (600-2)			
RNP 0.30 DA	1078-4 960 (1000-4)			

**AUTHORIZATION REQUIRED**

PAC, 11 JUL 2024 to 05 SEP 2024

PAC, 11 JUL 2024 to 05 SEP 2024