

WAAS CH <b>62815</b> <b>W32A</b>	APP CRS <b>325°</b>	Rwy Idg <b>6602</b> TDZE <b>1099</b> Apr Elev <b>1099</b>
--	------------------------	---

# RNAV (GPS) RWY 32

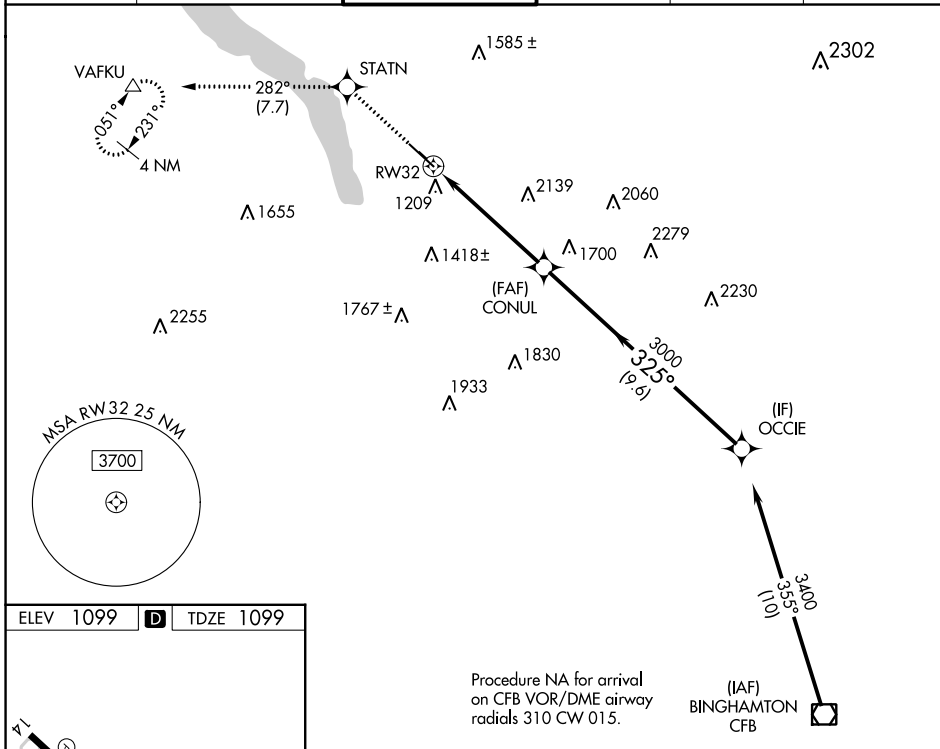
ITHACA TOMPKINS INTL (ITH)

RNP APCH

Circling NA to Rwy's 15 and 33. Inop table does not apply to LNAV Cat A. Rwy 32 helicopter visibility reduction below 3/4 SM NA. When local altimeter setting not received, use Elmira altimeter setting and increase all DA 84 feet and all MDA 100 feet. For inop MALSR, increase LNAV Cat B visibility 1/4 mile. For inop MALSR, when using Elmira altimeter setting, increase LPV all Cats visibility to RVR 6000, and increase LNAV Cat B visibility to 1/2.

**MALSR**  
 MISSED APPROACH: Climb to 3700 direct STATN and on track 282° to VAFKU and hold.

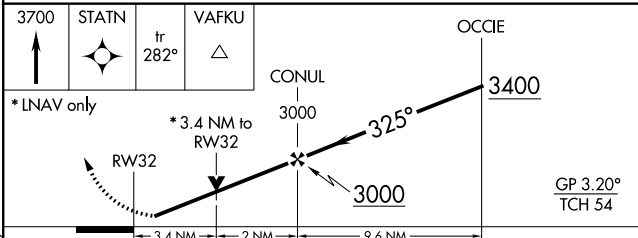
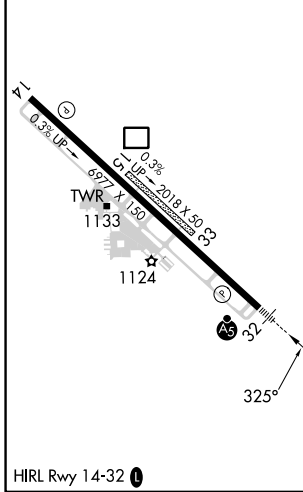
ATIS <b>125.175</b>	ELMIRA APP CON ★ <b>124.3 257.8</b>	ITHACA TOWER ★ <b>119.6</b> (CTAF)	GND CON <b>121.8</b>	CLNC DEL <b>121.8</b>	UNICOM <b>122.95</b>
------------------------	--	---------------------------------------	-------------------------	--------------------------	-------------------------



NE-2, 08 AUG 2024 to 05 SEP 2024

NE-2, 08 AUG 2024 to 05 SEP 2024

ELEV 1099	<b>D</b>	TDZE 1099
-----------	----------	-----------



CATEGORY	A	B	C	D
LPV DA	1385/40		286 (300-3/4)	
LNAV MDA	2300/60 1201 (1300-1 1/4)		2300-2 1/2 1201 (1300-2 1/2)	
<b>C</b> CIRCLING	2300-1 1/4 1201 (1300-1 1/4)		2300-3 1201 (1300-3) 2440-3 1341 (1400-3)	