

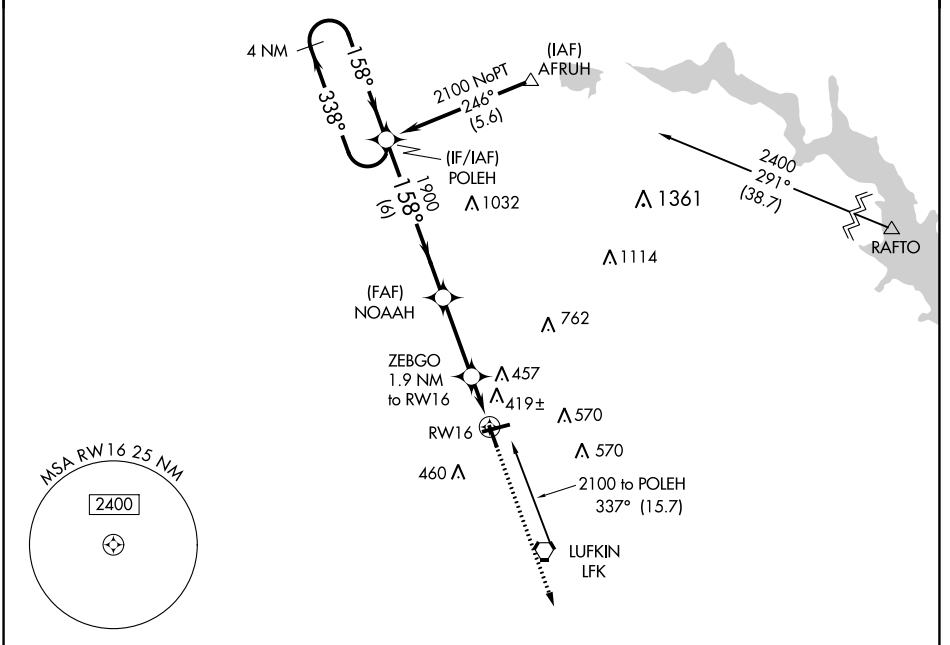
APP CRS <b>158°</b>	Rwy Idg TDZE Apt Elev	<b>4311</b> <b>289</b> <b>296</b>
------------------------	-----------------------------	---

# RNAV (GPS) RWY 16

ANGELINA COUNTY (L'FK)

<p><b>▼</b> DME/DME RNP-0.3 NA. <b>▲</b> Straight in Rwy 16 NA at night, Circling Rwy 16, 25 NA at night. Rwy 16 helicopter visibility reduction below 1 SM NA.</p>	MISSED APPROACH: Climb to 2000 direct EXISE and hold.
---	---

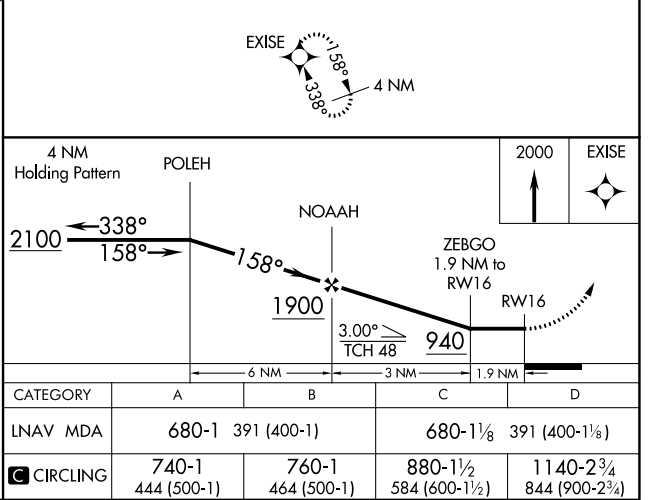
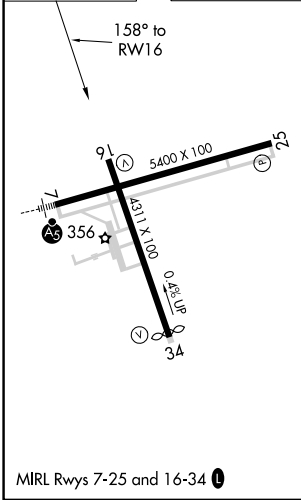
ASOS <b>120.625</b>	HOUSTON CENTER <b>125.175 285.575</b>	UNICOM <b>123.0 (CTAF) 0</b>
------------------------	--	---------------------------------



SC-5, 08 AUG 2024 to 05 SEP 2024

SC-5, 08 AUG 2024 to 05 SEP 2024

ELEV 296	TDZE 289
----------	----------



LUFKIN, TEXAS  
Amdt 1 07DEC17

31°14'N-94°45'W

# ANGELINA COUNTY (L'FK)

## RNAV (GPS) RWY 16