

APP CRS 177°	Rwy Idg 5005
	TDZE 416
	Apt Elev 423

RNAV (GPS) RWY 18

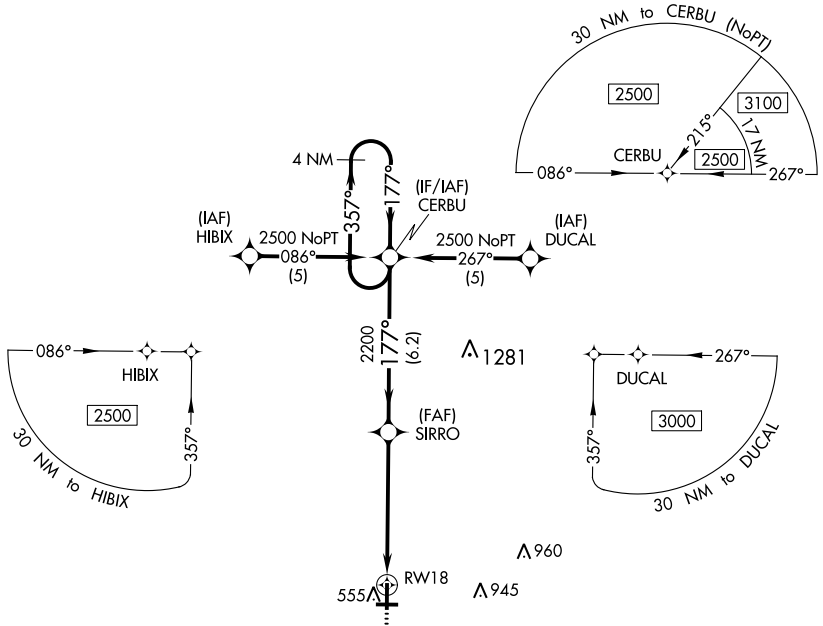
PALESTINE MUNI (PSN)

RNP APCH-GPS.

▼ VDP NA with C David Campbell Fld-Corsicana Muni altimeter setting. Circling to Rwy 9-27, NA at night. When local altimeter setting not received, use Corsicana altimeter setting and increase all MDAs 100 feet and visibility Cat C ¼ SM.

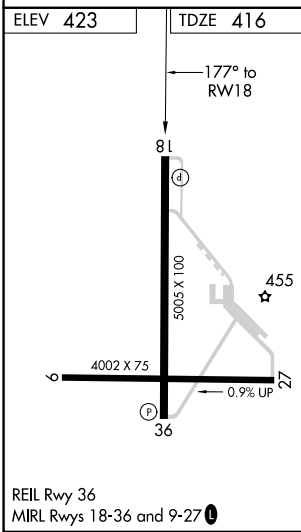
MISSED APPROACH: Climb to 3000 direct FERES and hold.

AWOS-3PT 118.025	FORT WORTH CENTER 135.25 265.1	UNICOM 122.7 (CTAF) 0
----------------------------	--	---------------------------------



SC-5, 08 AUG 2024 to 05 SEP 2024

SC-5, 08 AUG 2024 to 05 SEP 2024



ELEV 423 | TDZE 416

177° to RWY 18

81 | 4 | 455

5005 X 100

4002 X 75

36 | 27

0.9% UP

REIL Rwy 36
MIRL Rwy 18-36 and 9-27

MISSED APCH FIX
FERES

3000 FERES

VGSI and descent angles not coincident (VGSI Angle 3.00/TCH 45).

CERBU 4 NM Holding Pattern

SIRRO 2200

1.8 NM to RWY 18

1.8 | 3.7 NM | 6.2 NM

357° → 2500

← 177°

CATEGORY	A	B	C	D
LNAV MDA	1040-1	624 (700-1)	1040-1¾ 624 (700-1¾)	1040-2 624 (700-2)
CIRCLING	1040-1	617 (700-1)	1360-2¾ 937 (1000-2¾)	1360-3 937 (1000-3)