

WAAS CH <b>78572</b> <b>W32A</b>	APP CRS <b>324°</b>	Rwy Idg <b>7345</b> TDZE <b>153</b> Apt Elev <b>153</b>
--	------------------------	---

# RNAV (GPS) Z RWY 32

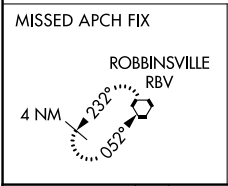
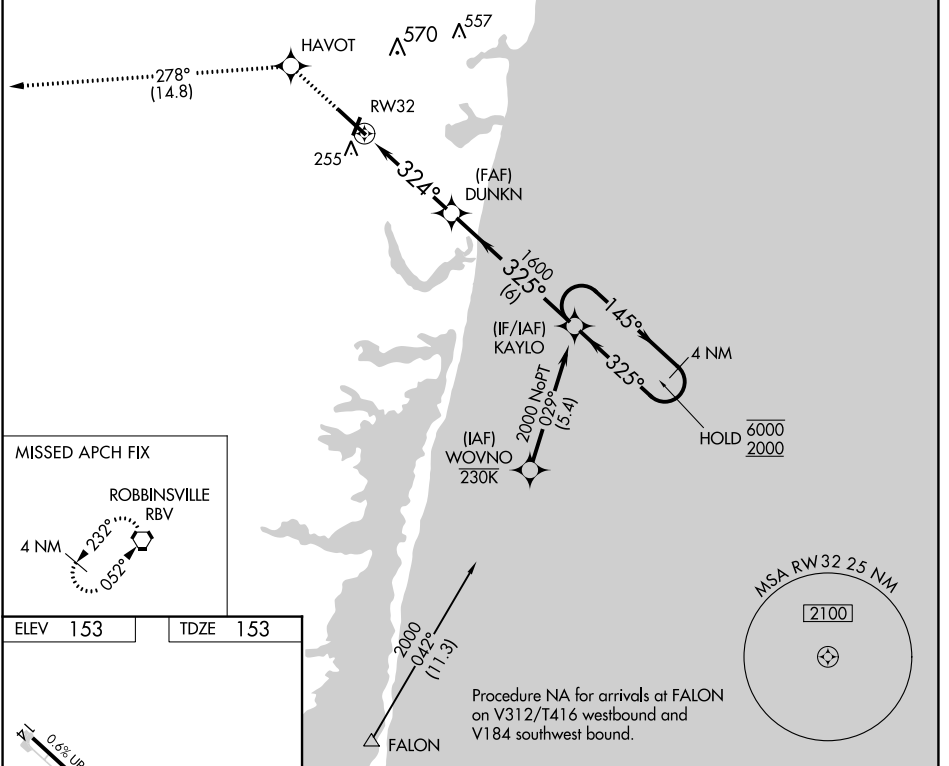
MONMOUTH EXEC (BLM)

RNP APCH - GPS.

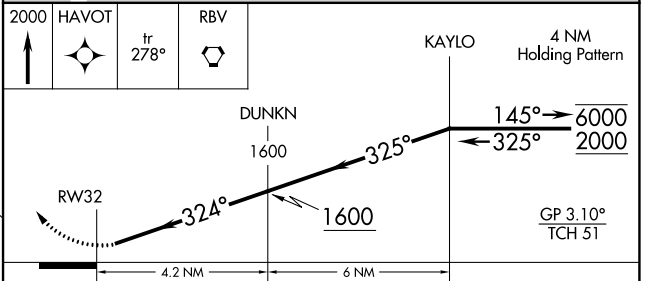
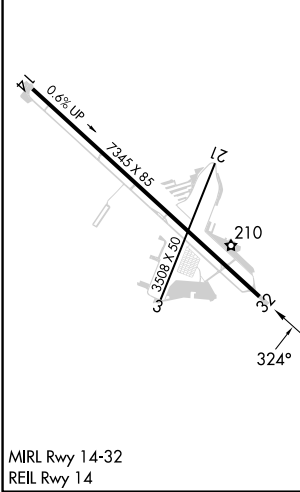
**⚠** For uncompensated Baro-VNAV systems, LNAV/VNAV NA below -15°C or above 54°C.  
**⚠** Rwy 32 helicopter visibility reduction below 3/4 SM NA. When local altimeter setting not received, use Lakehurst altimeter setting and increase LPV DA to 442 feet, increase LNAV/VNAV DA to 442 feet. Baro-VNAV NA when using Lakehurst altimeter setting.

MISSED APPROACH:  
 Climb to 2000 direct HAVOT, track 278° to RBV VORTAC and hold.

AWOS-3PT <b>121.625</b>	MC GUIRE APP CON <b>126.475 363.8</b>	CLNC DEL <b>126.15</b>	UNICOM <b>123.0</b> (CTAF)
----------------------------	--	---------------------------	-------------------------------



ELEV 153	TDZE 153
----------	----------



CATEGORY	A	B	C	D
LPV DA		403-1	250 (300-1)	
LNAV/VNAV DA		403-1	250 (300-1)	

NE-2, 08 AUG 2024 to 05 SEP 2024

NE-2, 08 AUG 2024 to 05 SEP 2024