

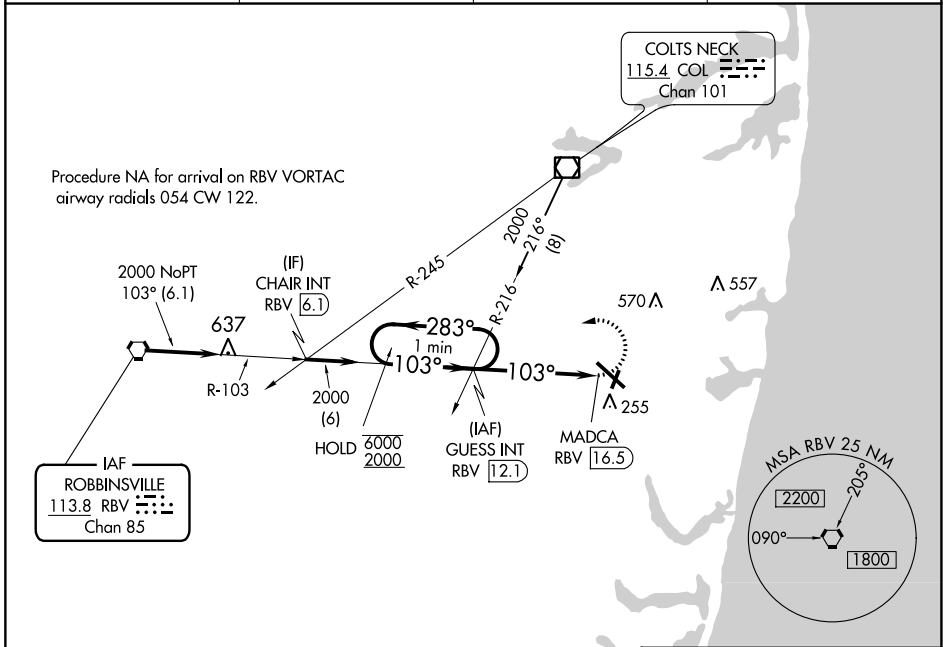
VORTAC RBV <b>113.8</b> Chan <b>85</b>	APP CRS <b>103°</b>	Rwy Idg TDZE Apt Elev <b>N/A</b> <b>N/A</b> <b>153</b>
----------------------------------------------	------------------------	-----------------------------------------------------------------------

**VOR-A**  
MONMOUTH EXEC (BLM)

**⚠** Circling Rwy 3, 21 NA at night. When local altimeter setting not received, use Lakehurst altimeter setting and increase all MDA 40 feet: increase Cat C/D visibility ¼ SM.

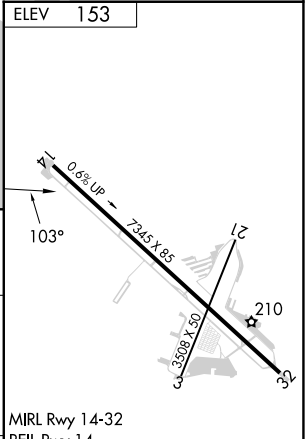
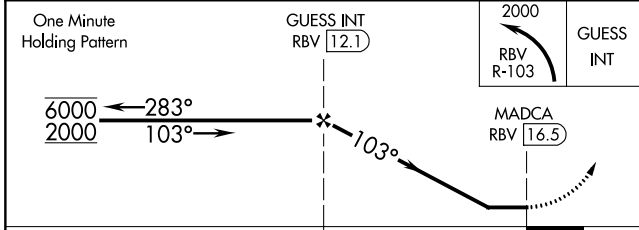
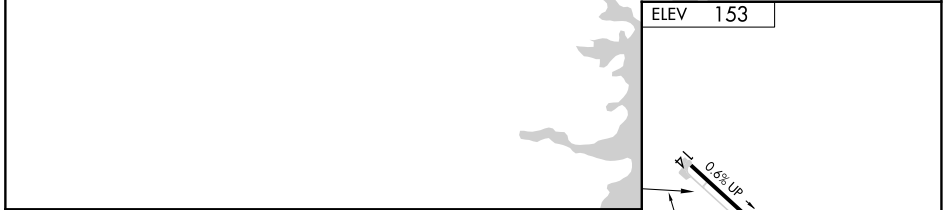
MISSED APPROACH: Climbing left turn to 2000 on RBV VORTAC R-103 to GUESS INT/RBV 12.1 DME and hold.

AWOS-3PT <b>121.625</b>	MC GUIRE APP CON <b>126.475 363.8</b>	CLNC DEL <b>126.15</b>	UNICOM <b>123.0</b> (CTAF)
----------------------------	------------------------------------------	---------------------------	-------------------------------



NE-2, 08 AUG 2024 to 05 SEP 2024

NE-2, 08 AUG 2024 to 05 SEP 2024



CATEGORY	A	B	C	D	FAF to MAP 4.5 NM					
CIRCLING	640-1	487 (500-1)	880-2 727 (800-2)	880-2¼ 727 (800-2¼)	Knots	60	90	120	150	180
					Min:Sec	4:30	3:00	2:15	1:48	1:30