

HI-TACAN Z RWY 32L/R

TACAN NTU Chan 113	APCH CRS 309°	Rwy ldg TDZE 32L 8000 32R 20	32R 8001 20
		Arpt Elev 22	

AL-934 [USN]

OCEANA NAS (APOLLO SOUCEK FLD) (KNTU)

ALSF-1
 * When ALS inop, increase CAT CDE vis to 1½ miles.

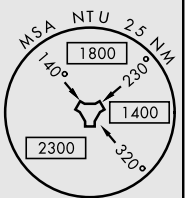
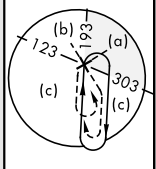
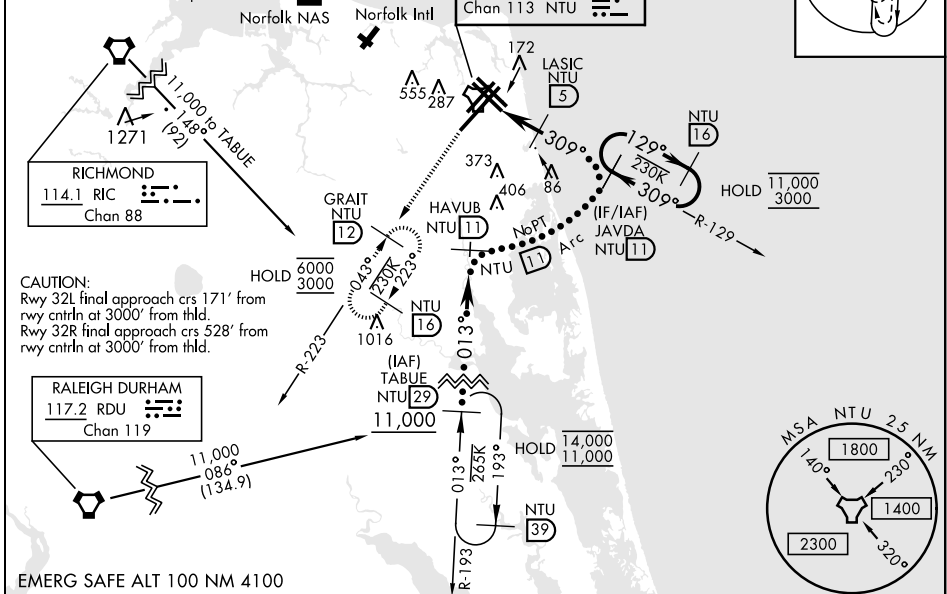
MISSED APPROACH: Climbing left turn to 3000,
 intercept NTU TACAN R-223 to GRAIT and hold.

ATIS 317.6	APP/DEP CON 123.9 266.8	TOWER 127.075 360.2	GND CON 119.6 336.4	CLNC DEL 254.4	ASR/ PAR
---------------	----------------------------	------------------------	------------------------	-------------------	-------------

Knots	60	120	180	240	300	360
V/V(fpm)	220	440	660	880	1100	1320

Min climb of 220 ft/NM to 3000 - Controlling Obstacle Unk

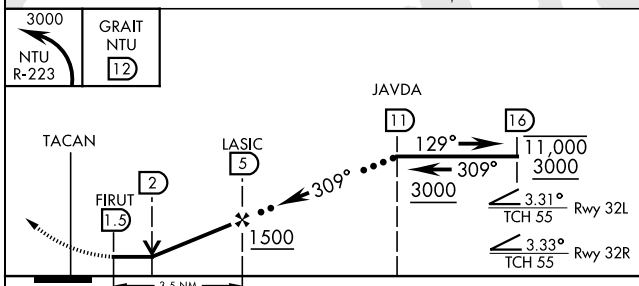
RICHMOND feeder turn exceeds 120°.
 RADAR or turn in hold required



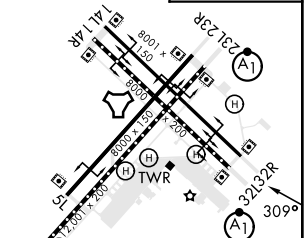
NE-3, 08 AUG 2024 TO 05 SEP 2024

NE-3, 08 AUG 2024 TO 05 SEP 2024

EMERG SAFE ALT 100 NM 4100



ELEV 22	TDZE 32L 22	TDZE 32R 20
---------	-------------	-------------



CATEGORY	C	D	E
S-32L *	440-¾	418 (500-¾)	
S-32R	440-1½	420 (500-1½)	
CIRCLING	600-1½ 578 (600-1½)	600-2 578 (600-2)	900-3 878 (900-3)

HIRL all Rwy
 Wave-Off Lgt all Rwy

HI-TACAN Z RWY 32L/R