

EASTOVER, SOUTH CAROLINA

HI-TACAN RWY 32

MC ENTIRE JNGB (KMMT)

VORTAC MMT 113.2 Chan 79	APCH CRS 328°	Rwy ldg TDZE Arpt Elev 9009 243 254
--	-------------------------	---

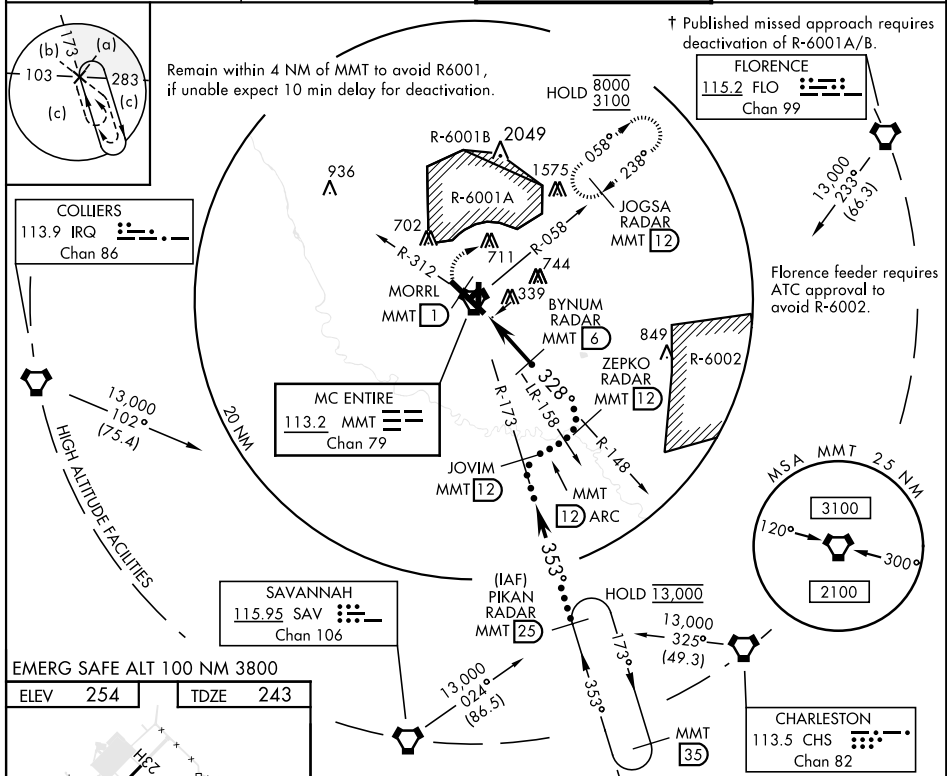
AL-951 [USAF]

⚠ * When ALS inop, increase CAT CDE RVR 60, vis to 1½ miles.



† MISSED APPROACH: Climb to 1100 direct MORRL/1 DME then climbing right turn to 3100 intercept MMT R-058 direct JOGSA/12 DME and hold.

ATIS ★ 327.05	SHAW APP CON 125.4 318.1	TOWER ★ 132.4 (CTAF) 253.5	GND CON 127.625 226.675
-------------------------	------------------------------------	--------------------------------------	-----------------------------------



EMERG SAFE ALT 100 NM 3800

ELEV 254	TDZE 243
----------	----------

Rwy 5H-23H, COPTER ONLY.
HIRL Rwy 14-32
MIRL Rwy 5H-23H
REIL Rwy 14

FAF to MAP 4.5 NM

Knots	120	140	160	180	200
Min:Sec	2:15	1:56	1:41	1:30	1:21

1100 MORRL MMT 1.5	3100 MMT R-058	JOGSA MMT 12	PIKAN RADAR 25
VORTAC	HUTEM 2.3	BYNUM RADAR 6	ZEPKO RADAR 12
			JOVIM 12
			13,000
			3500
			2000
			1700
			Arc
			2.67° TCH 48
CATEGORY	C	D	E
S-32 *	640/40	397	(400-¾)
CIRCLING	880-1¾ 626 (700-1¾)	940-2½ 686 (700-2½)	1020-2¾ 766 (800-2¾)

EASTOVER, SOUTH CAROLINA
Amdt 4 25MAY17

33°55'N-80°48'W

MC ENTIRE JNGB (KMMT)

HI-TACAN RWY 32

SE-2, 08 AUG 2024 to 05 SEP 2024

SE-2, 08 AUG 2024 to 05 SEP 2024