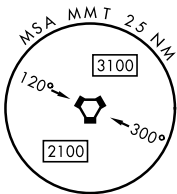
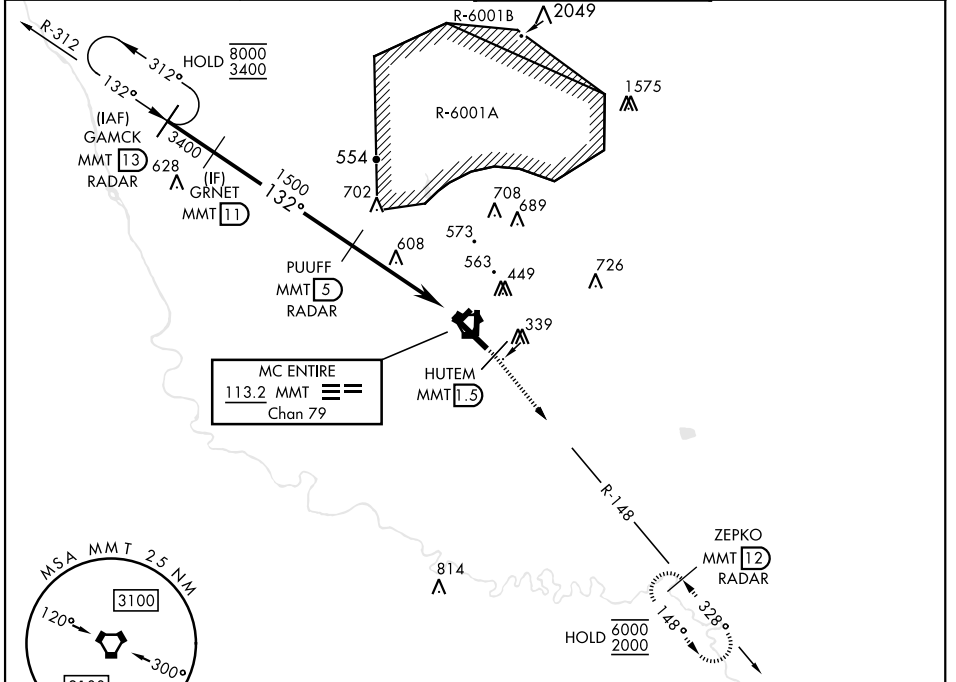


TACAN RWY 14

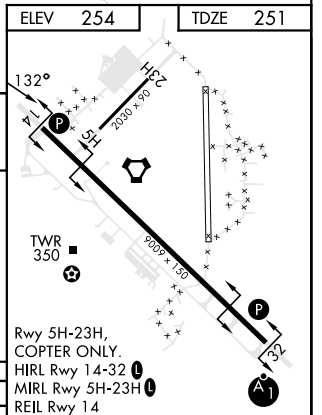
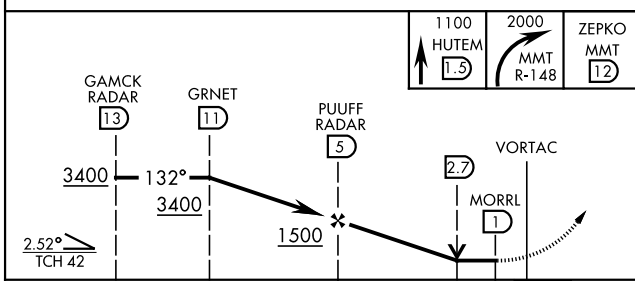
VORTAC MMT 113.2 Chan 79	APCH CRS 132°	Rwy Idg TDZE Arprt Elev 9009 251 254	AL-951 [USAF]	MC ENTIRE JNGB (KMMT)
--	-------------------------	--	---------------	-----------------------

* Circling to Rwy 05H-23H NA at night. MISSED APPROACH: Climb to 1100 direct HUTEM/1.5 DME then climbing right turn to 2000 intercept MMT R-148 direct ZEPKO/12 DME and hold.

ATIS ★ 327.05	SHAW APP CON 125.4 318.1	TOWER ★ 132.4 (CTAF) 253.5	GND CON 127.625 226.675
-------------------------	------------------------------------	--------------------------------------	-----------------------------------



EMERG SAFE ALT 100 NM 3800



CATEGORY	A	B	C	D	E
S-14	880-1	629 (700-1)	880-1¾	629 (700-1¾)	
CIRCLING*	880-1	626 (700-1)	880-1¾	1020-2½	1020-2¾

FAF to MAP 4.0 NM					
Knots	60	90	120	150	180
Min:Sec	4:00	2:40	2:00	1:36	1:20

TACAN RWY 14

SE-2, 08 AUG 2024 to 05 SEP 2024

SE-2, 08 AUG 2024 to 05 SEP 2024