

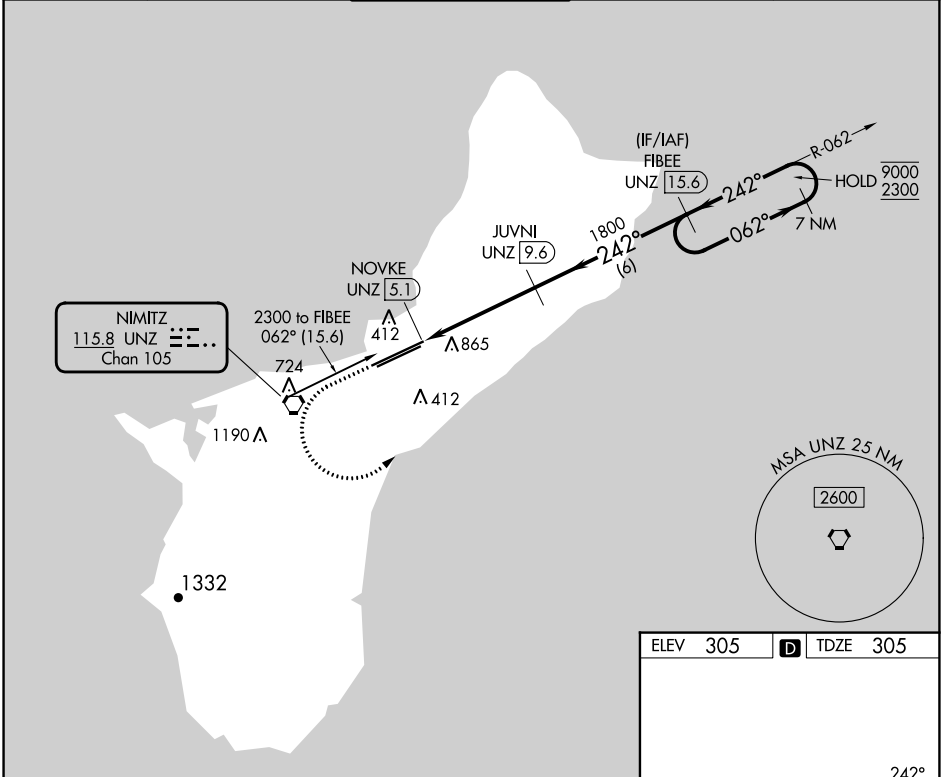
VORTAC UNZ	APP CRS	Rwy Idg	12014
115.8	242°	TDZE	305
Chan 105		Apt Elev	305

VOR or TACAN RWY 24R

GUAM INTL (GUM)(PGUM)

DME required.		MISSED APPROACH: Climb to 2300 then left turn on UNZ VORTAC R-062 to FIBEE/UNZ 15.6 DME and hold.	
▽	Circling NA southeast of Rwy 6R-24L.		
⚠	Rwy 24R helicopter visibility reduction below ¾ SM NA.		

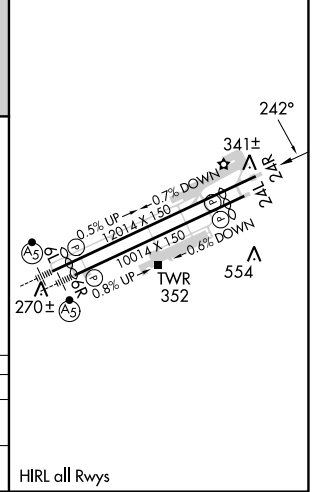
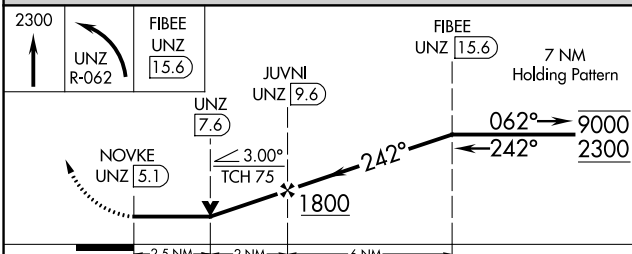
ATIS	GUAM CERAP	AGANA TOWER	GND CON	CLNC DEL
119.0	119.8 269.0	118.1 340.2	121.9 336.4	121.9



PAC, 11 JUL 2024 to 05 SEP 2024

PAC, 11 JUL 2024 to 05 SEP 2024

ELEV	305	D	TDZE	305
------	-----	----------	------	-----



CATEGORY	A	B	C	D
S-24R	1180-1 875 (900-1)	1180-1¼ 875 (900-1¼)	1180-2½	875 (900-2½)
C CIRCLING	1180-1¼	875 (900-1¼)	1180-2½ 875 (900-2½)	NA

HIRL all Rwys