

MINOT, NORTH DAKOTA

RNAV (GPS) Y RWY 30

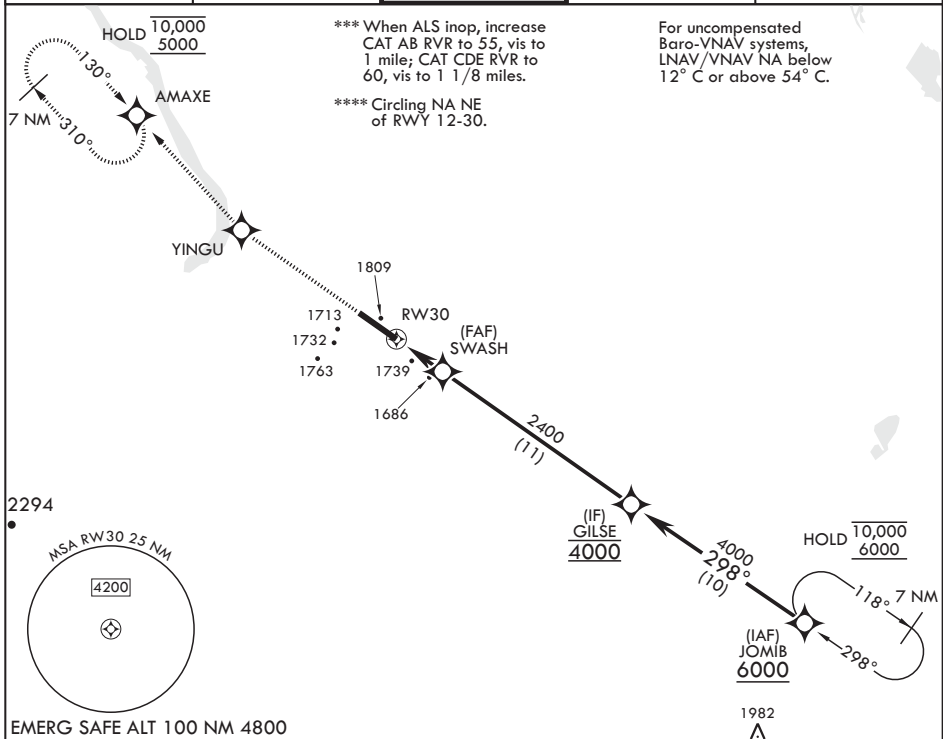
WAAS CH 47084 W30B	APCH CRS 298°	Rwy ldg TDZE Arprt Elev	13,198 1646 1666
--	-------------------------	-------------------------------	---

AL-5013 (USAF)

MINOT AFB (KMIB)

RNP APCH - GPS	ALSF-1	MISSED APPROACH: Climb to 5000 direct YINGU, track 310° to AMAXE and hold.
<p>▼ * When ALS inop, increase RVR to 40, vis to 3/4 mile.</p> <p>** When ALS inop, increase RVR to 60, vis to 1 1/8 miles.</p>		

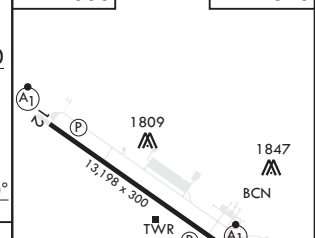
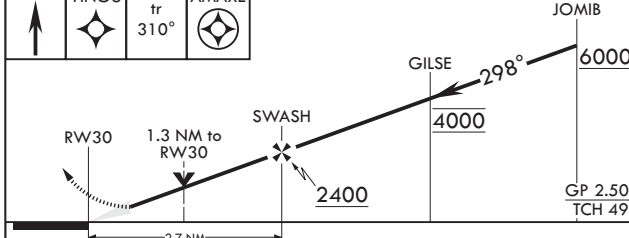
ATIS* 278.8	APP CON 119.6 363.8	TOWER* 120.65 253.5	GND CON 134.0 275.8	CLNC DEL 326.2
-----------------------	-------------------------------	-------------------------------	-------------------------------	--------------------------



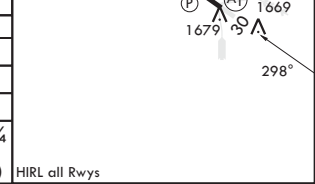
NC-1, 08 AUG 2024 to 05 SEP 2024

NC-1, 08 AUG 2024 to 05 SEP 2024

5000	YINGU	tr 310°	AMAXE	JOMIB	ELEV 1666	TDZE 1646
------	-------	---------	-------	-------	-----------	-----------



CATEGORY	A	B	C	D	E
LPV DA*	1846/24		200	(200-1/2)	
LNAV/VNAV DA**	2027/35		381	(400-5/8)	
LNAV MDA***	2040/24 394 (400-1/2)		2040/40	394 (400-3/4)	
CIRCLING****	2120-1	2140-1	2180-1 1/2	2320-2	2320-2 1/4
	454 (500-1)	474 (500-1)	514 (600-1 1/2)	654 (700-2)	654 (700-2 1/4)



MINOT, NORTH DAKOTA 48°25'N - 101°21'W MINOT AFB (KMIB)

Orig 15JUN23 **RNAV (GPS) Y RWY 30**