

WAAS CH 90227 W27A	APP CRS 270°	Rwy Idg TDZE Apt Elev	4977 40 40
--	------------------------	-----------------------------	---------------------------------------

RNAV (GPS) RWY 27

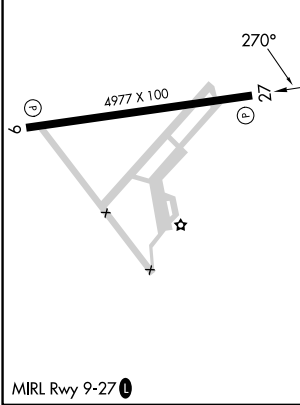
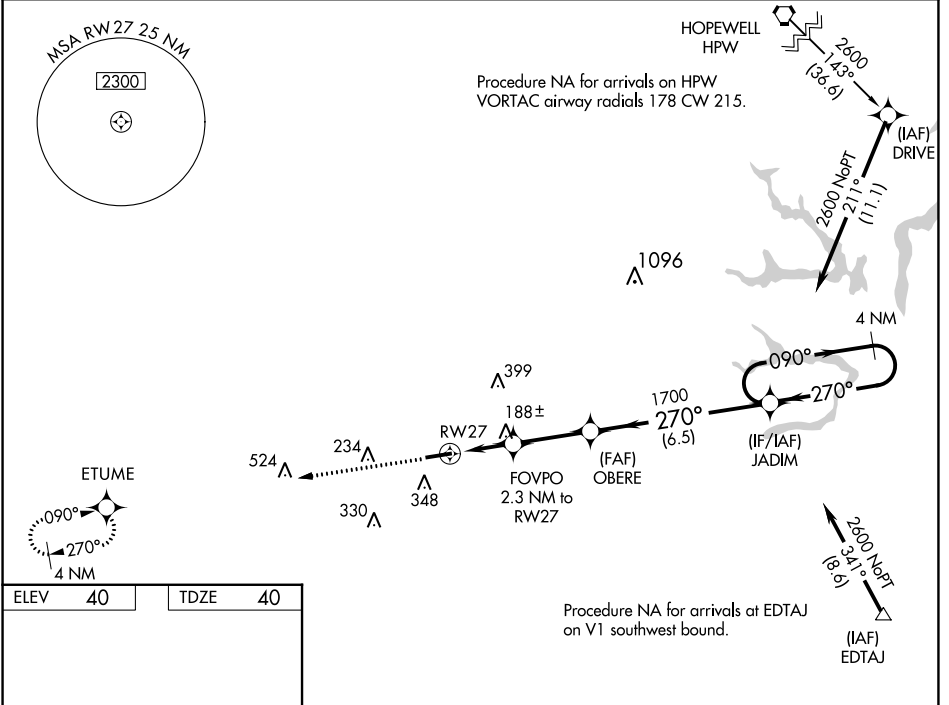
FRANKLIN RGNL (FKN)

RNP APCH.

⚠ For uncompensated Baro-VNAV systems, LNAV/VNAV NA below -15°C or above 54°C. Baro-VNAV and VDP NA when using Suffolk altimeter setting. When local altimeter setting not received, use Suffolk altimeter setting: increase LPV DA to 404 feet and visibility all Cats 1/8 SM; increase LNAV/VNAV DA to 392 feet and visibility all Cats 1/4 SM; increase all MDA 40 feet and LNAV Cats C/D visibility 1/8 SM. Rwy 27 helicopter visibility reduction below 3/4 SM NA.

MISSED APPROACH: Climb to 2600 direct ETUME and hold.

AWOS-3PT 124.675	NORFOLK APP CON 127.9 269.425	UNICOM 122.8 (CTAF) 0
----------------------------	---	---------------------------------



CATEGORY	A	B	C	D
LPV DA		366-1 1/8	326 (400-1 1/8)	
LNAV/VNAV DA		354-1	314 (400-1)	
LNAV MDA	440-1	400 (400-1)	440-1 1/8	400 (400-1 1/8)

NE-3, 08 AUG 2024 to 05 SEP 2024

NE-3, 08 AUG 2024 to 05 SEP 2024