

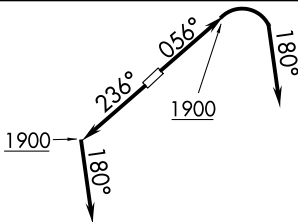
(AHMET4.KKIDS) 23278

AL-5027 (FAA)

CUYAHOGA COUNTY (CGF)
CLEVELAND, OHIO

AHMET FOUR DEPARTURE (RNAV)

D-ATIS
 119.95
 CLNC DEL
 121.85 (when tower closed)
 GND CON
 121.85
 COUNTY TOWER *
 118.5 (CTAF)
 CLEVELAND DEP CON
 125.35 346.325

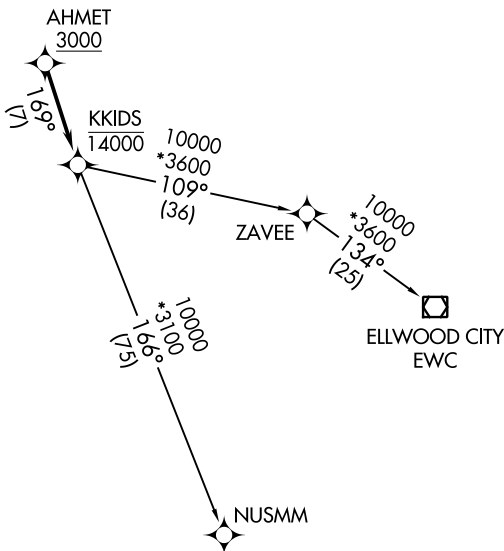


**TOP ALTITUDE:
 ASSIGNED BY ATC**

TAKEOFF MINIMUMS:

Rwys 6, 24: Standard
 with minimum climb of
 500' per NM to 1400.

NOTE: RNAV 1.
 NOTE: RADAR required.
 NOTE: DME/DME/IRU or GPS required.



NOTE: Chart not to scale.



DEPARTURE ROUTE DESCRIPTION

TAKEOFF RUNWAY 6: Climb on heading 056° to 1900, then right turn on heading 180° or as assigned by ATC for RADAR vectors to cross AHMET at or above 3000, thence....

TAKEOFF RUNWAY 24: Climb on heading 236° to 1900, then on heading 180° or as assigned by ATC for RADAR vectors to cross AHMET at or above 3000, thence....

....on track 169° to cross KKIDS at or below 14000, then on (transition).

Maintain altitude assigned by ATC, expect filed altitude ten minutes after departure.

ELLWOOD CITY TRANSITION (AHMET4.EWC)

NUSMM TRANSITION (AHMET4.NUSMM)

AHMET FOUR DEPARTURE (RNAV)

(AHMET4.KKIDS) 26MAR20

CLEVELAND, OHIO
CUYAHOGA COUNTY (CGF)

EC-2, 08 AUG 2024 to 05 SEP 2024

EC-2, 08 AUG 2024 to 05 SEP 2024