

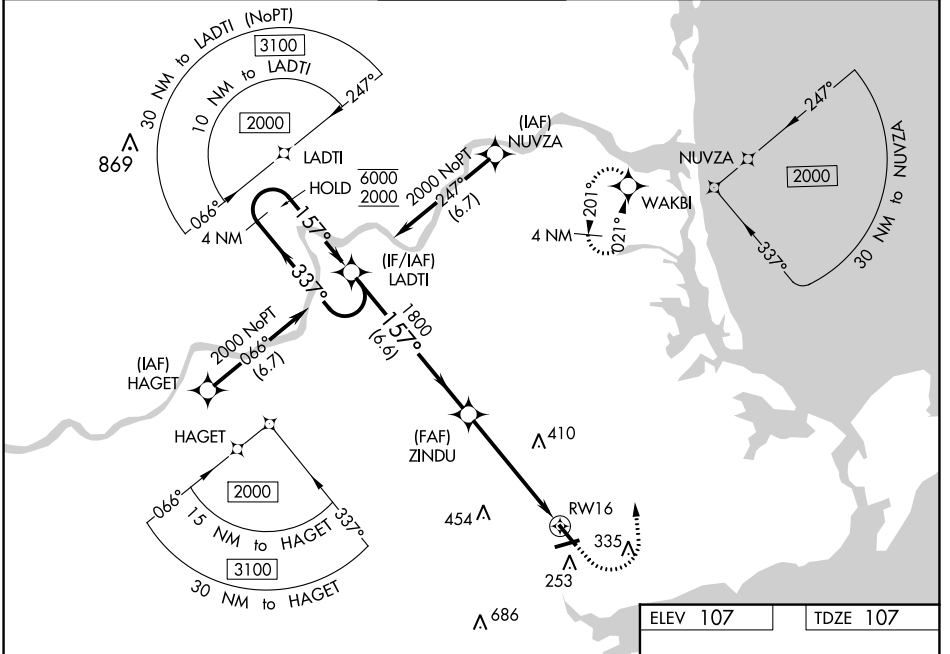
WAAS CH 93722 W16A	APP CRS 157°	Rwy Idg 4762 TDZE 107 Apt Elev 107
--	------------------------	---

RNAV (GPS) RWY 16

BEVERLY RGNL (BVY)

RNP APCH-GPS.		MALS A3	MISSED APPROACH: Climb to 600 then climbing left turn to 2000 direct WAKBI and hold.
<p>⚠ Circling Rwy 9 NA at night. Rwy 16 helicopter visibility reduction below ¾ SM NA. Inop table does not apply. For uncompensated Baro-VNAV systems, LNAV/VNAV NA below -18° C or above 54° C.</p>			

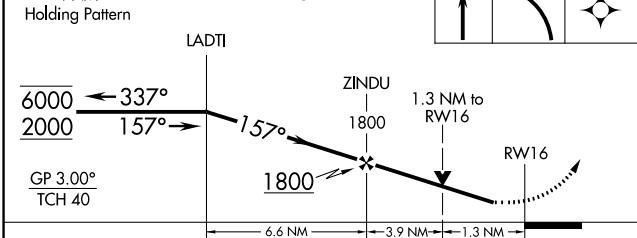
ATIS 119.2	BOSTON APP CON 124.4 279.6	BEVERLY TOWER★ 125.2 (CTAF) 0	GND CON 121.6	UNICOM 122.95
----------------------	--------------------------------------	--	-------------------------	-------------------------



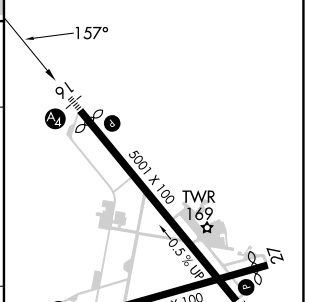
NE-1, 08 AUG 2024 to 05 SEP 2024

NE-1, 08 AUG 2024 to 05 SEP 2024

4 NM Holding Pattern	VGSI and RNAV glidepath not coincident (VGSI Angle 3.50/TCH 41).	600	2000	WAKBI
----------------------	--	-----	------	-------



ELEV 107	TDZE 107
----------	----------



CATEGORY	A	B	C	D
LPV DA		357-¾	250 (300-¾)	
LNAV/VNAV DA		422-7/8	315 (400-7/8)	
LNAV MDA	620-1	513 (600-1)	620-1 3/8	513 (600-1 3/8)
C CIRCLING	620-1	513 (600-1)	820-2 713 (800-2)	820-2 1/4 713 (800-2 1/4)

MIRL Rwy 9-27 and 16-34
REIL Rwy 34