

WAAS CH <b>99731</b> <b>W27A</b>	APP CRS <b>270°</b>	Rwy Idg <b>4505</b> TDZE <b>91</b> Apt Elev <b>107</b>
--	------------------------	--

# RNAV (GPS) RWY 27

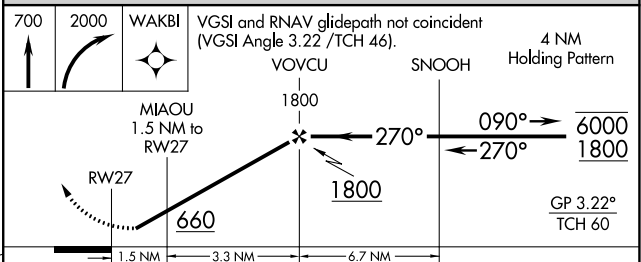
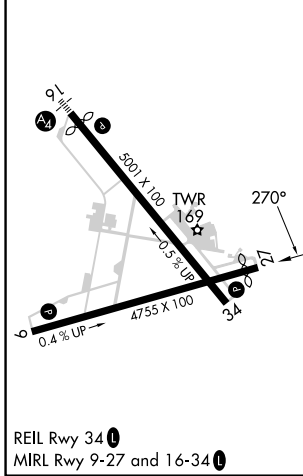
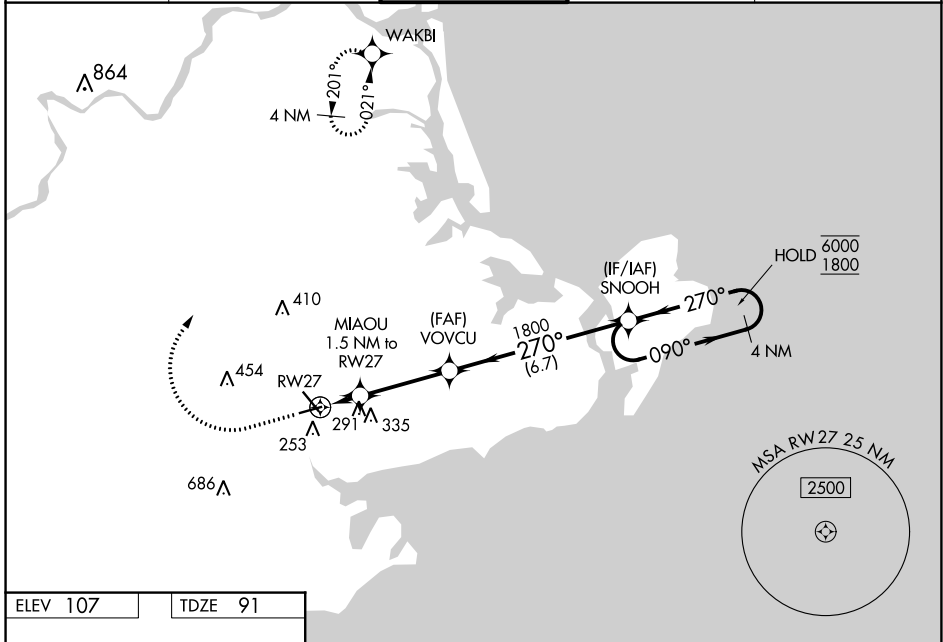
BEVERLY RGNL (BVY)

RNP APCH - GPS.

**⚠** Circling Rwy 9 NA at night. Rwy 27 helicopter visibility reduction below  $\frac{3}{4}$  SM NA. For uncompensated Baro-VNAV systems, LNAV/VNAV NA below -18°C or above 54°C.

MISSED APPROACH: Climb to 700 then climbing right turn to 2000 direct WAKBI and hold.

ATIS <b>119.2</b>	BOSTON APP CON <b>124.4 279.6</b>	BEVERLY TOWER★ <b>125.2 (CTAF) 0</b>	GND CON <b>121.6</b>	UNICOM <b>122.95</b>
----------------------	--------------------------------------	---	-------------------------	-------------------------



CATEGORY	A	B	C	D
LPV DA	444-1	353 (400-1)		NA
LNAV/VNAV DA	438-1	347 (400-1)		NA
LNAV MDA	540-1	449 (500-1)	540-1 $\frac{3}{8}$	449 (500-1 $\frac{3}{8}$ )
<b>C</b> CIRCLING	600-1	493 (500-1)	820-2 713 (800-2)	820-2 $\frac{1}{4}$ 713 (800-2 $\frac{1}{4}$ )

NE-1, 08 AUG 2024 to 05 SEP 2024

NE-1, 08 AUG 2024 to 05 SEP 2024