

| | | | |
|--|------------------------|-----------------------------|---|
| WAAS CH 97631 W34A | APP CRS 337° | Rwy Idg TDZE Apt Elev | 5001 102 107 |
|--|------------------------|-----------------------------|---|

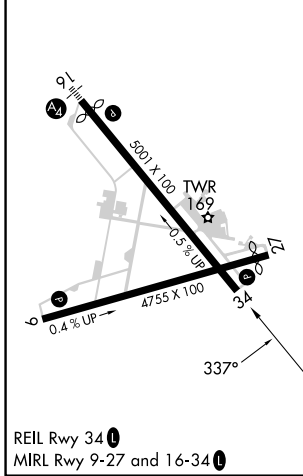
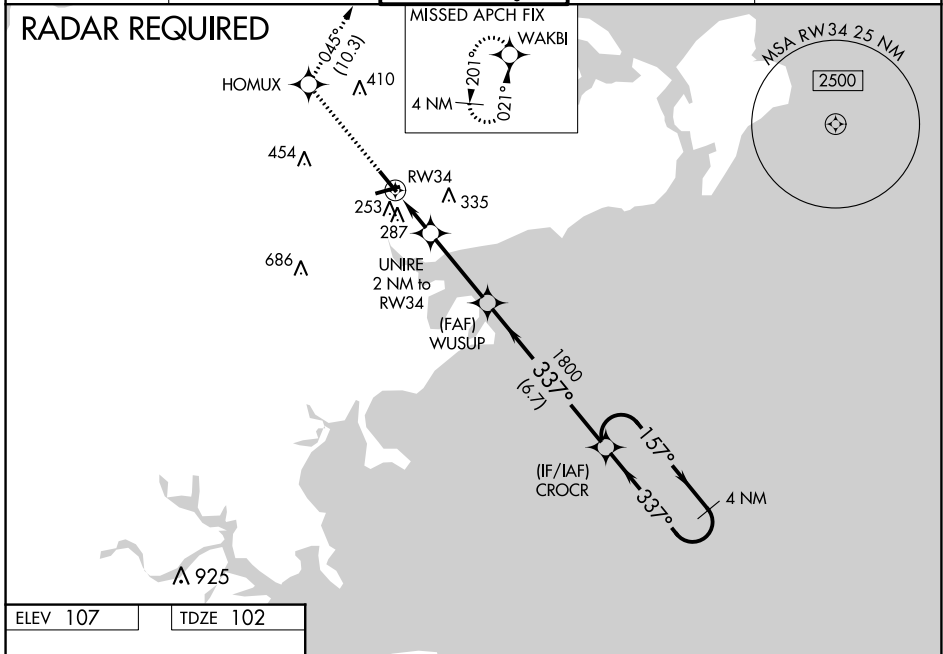
RNAV (GPS) RWY 34

BEVERLY RGNL (BVY)

⚠ For uncompensated Baro-VNAV systems, LNAV/VNAV NA below -18°C (0°F) or above 54°C (130°F). Baro-VNAV and VDP NA when using Lawrence altimeter setting. DME/DME RNP-0.3 NA. When local altimeter setting not received, use Lawrence altimeter setting; increase LPV DA to 416 and LNAV/VNAV DA to 502 and all MDA 40 feet; increase LPV all Cats visibility and LNAV/VNAV all Cats visibility and LNAV Cats C and D visibility 1/8 SM and Circling Cats C and D visibility 1/4 SM. Circling Rwy 9 NA at night. Rwy 34 helicopter visibility reduction below 3/4 SM NA. Rwy 9 helicopter visibility reduction below 1 SM NA.

MISSED APPROACH:
Climb to 2000 direct
HOMUX and on track
045° to WAKBI and hold.

| | | | | |
|----------------------|--------------------------------------|---|-------------------------|-------------------------|
| ATIS 119.2 | BOSTON APP CON 124.4 279.6 | BEVERLY TOWER ★ 125.2 (CTAF) 0 | GND CON 121.6 | UNICOM 122.95 |
|----------------------|--------------------------------------|---|-------------------------|-------------------------|



| | | | | |
|-------------------|---------------------------|-----------------------|----------------------|-------------------------------|
| 2000 | HOMUX | tr 045° | WAKBI | 4 NM |
| *LNAV only. | | | | |
| | RW34 | UNIRE 2 NM to RW34 | WUSUP 1800 | CROCR 4 NM Holding Pattern |
| | 1.3 NM | 0.7 NM | 3.2 NM | 6.7 NM |
| | | *760 | 1800 | 157° → ← 337° |
| | | | | GP 3.00° TCH 54 |
| CATEGORY | A | B | C | D |
| LPV DA | 382-1 280 (300-1) | | | |
| LNAV/VNAV DA | 468-1 1/4 366 (400-1 1/4) | | | |
| LNAV MDA | 540-1 | 438 (500-1) | 540-1 1/4 | 438 (500-1 1/4) |
| C CIRCLING | 600-1 | 493 (500-1) | 820-2 713 (800-2) | 880-2 1/2 773 (800-2 1/2) |

NE-1, 08 AUG 2024 to 05 SEP 2024

NE-1, 08 AUG 2024 to 05 SEP 2024