

LEMOORE, CALIFORNIA

# HI-TACAN Z RWY 32L

TACAN NLC Chan <b>80</b>	APCH CRS <b>322°</b>	Rwy Idg TDZE Arprt Elev <b>13,501</b> <b>227</b> <b>228</b>
-----------------------------	-------------------------	--

AL-5067 [USN]

LEMOORE NAS (REEVES FIELD) (KNLC)

▲ \*When ALS inop, increase CAT CDE vis to 1 mile.

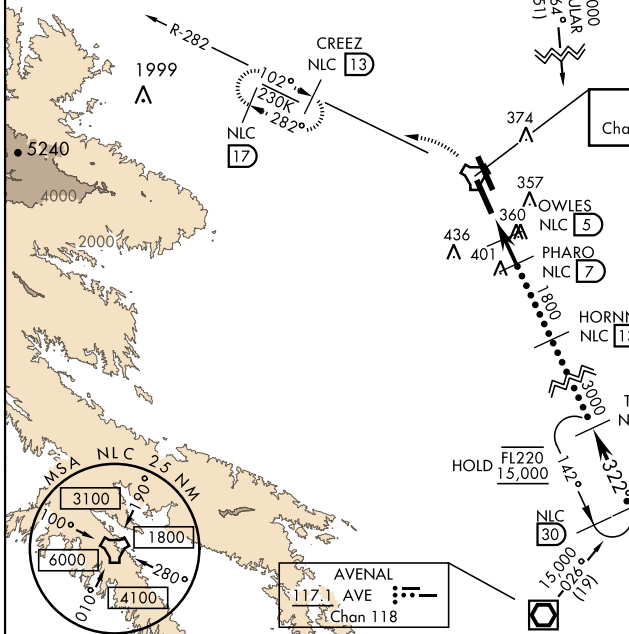
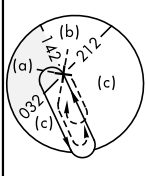
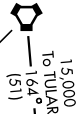


MISSED APPROACH: Climb to 3000 via R-142 to NLC TACAN, then via R-282 to CREEZ and hold.

ATIS★ <b>121.575 327.15</b>	APP CON <b>124.1 269.025 (N)</b> <b>118.15 269.025 (S)</b>	TOWER★ <b>128.3 340.2</b>	GND CON <b>121.65 305.2</b>	CLNC DEL <b>124.1 371.9</b>	ASR/ PAR
--------------------------------	--	------------------------------	--------------------------------	--------------------------------	-------------

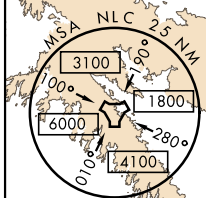
Simultaneous approaches authorized.

CLOVIZ  
Chan 76 CZQ



LEMOORE  
Chan 80 NLC

SHAFTER  
Chan 101 EHF



AVENAL  
117.1 AVE

Chan 118

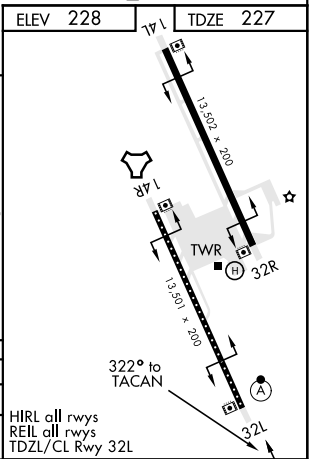
EMERG SAFE ALT 100 NM 16,500'

3000 NLC R-142

NLC R-282

CREEZ 13

CATEGORY	C	D	E
S-32L *	580-5/8	353 (400-5/8)	
CIRCLING	700-1 1/2 472 (500-1 1/2)	780-2 552 (600-2)	



LEMOORE, CALIFORNIA  
Amdt 7 19MAY22

36°20'N-119°57'W

LEMOORE NAS (REEVES FIELD) (KNLC)

# HI-TACAN Z RWY 32L

SW-2, 08 AUG 2024 to 05 SEP 2024

SW-2, 08 AUG 2024 to 05 SEP 2024