

RNAV (GPS) RWY 32L

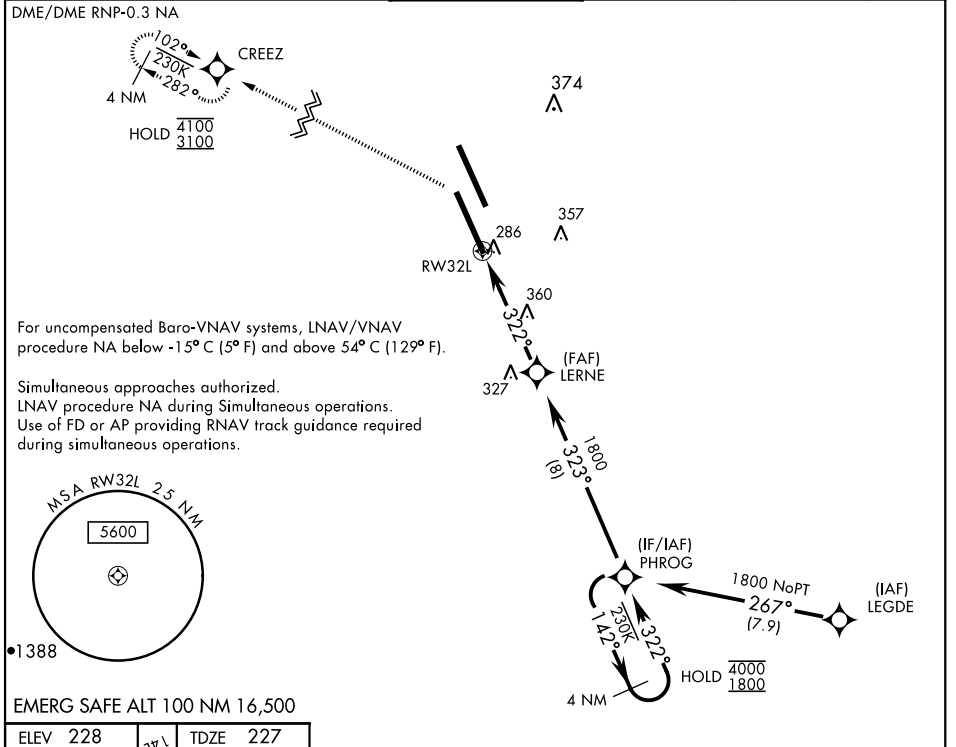
WAAS Chan 50085 W32A	APCH CRS 322°	Rwy Ildg 13,501 TDZE 227 Arprt Elev 228
--	-------------------------	--

AL-5067 [USN]

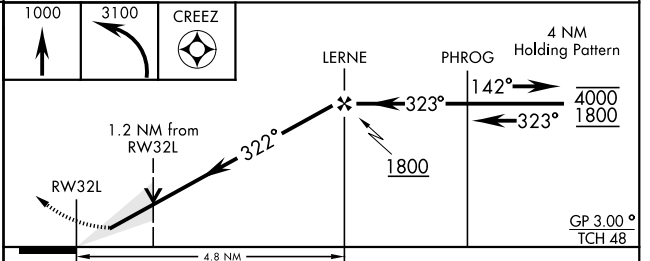
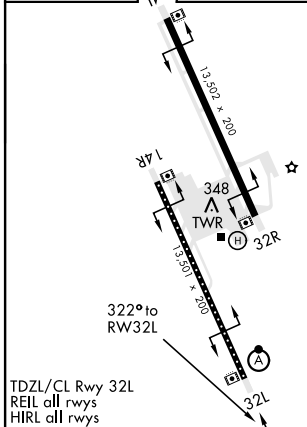
LEMOORE NAS (REEVES FIELD) (KNLC)

<p>⚠ * When ALS inop, increase vis to ¼ mile. ** When ALS inop, increase CAT AB vis to 1 mile; CAT CD vis to 1¼ miles.</p>	<p>ALSIF-2</p>	<p>MISSED APPROACH: Climb to 1000, then climbing left turn to 3100 direct CREEZ and hold.</p>
--	----------------	---

<p>ATIS ★ 121.575 327.15</p>	<p>APP CON 124.1 269.025 (N) 118.15 269.025 (S)</p>	<p>TOWER ★ 128.3 340.2</p>	<p>GND CON 121.65 305.2</p>	<p>CLNC DEL 124.1 371.9</p>	<p>ASR/PAR</p>
---	---	---------------------------------------	--	--	----------------



ELEV 228	TDZE 227
----------	----------



CATEGORY	A	B	C	D
LPV DA *	427-½ 200 (200-½)			
LNAV/VNAV DA *	477-½ 250 (300-½) 482-½ 255 (300-½)			
LNAV MDA**	660-½ 433 (500-½)		660-¾ 433 (500-¾)	
Ⓢ CIRCLING	680-1 452 (500-1)		700-1½ 780-2 472 (500-1½) 552 (600-2)	

RNAV (GPS) RWY 32L

SW-2, 08 AUG 2024 to 05 SEP 2024

SW-2, 08 AUG 2024 to 05 SEP 2024