

WAAS CH 86227 W24A	APP CRS 238°	Rwy Idg TDZE Apt Elev	6201 2087 2105
--	------------------------	-----------------------------	---

RNAV (GPS) RWY 24

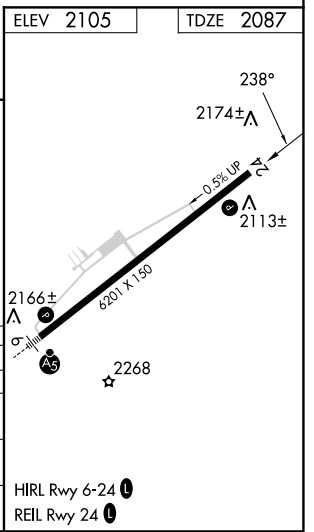
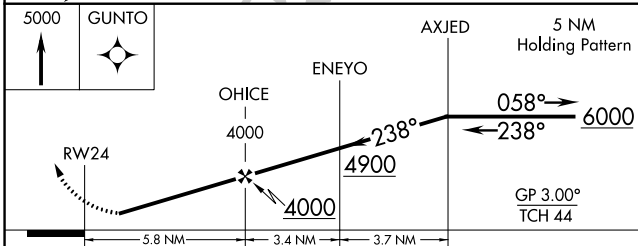
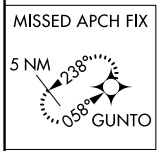
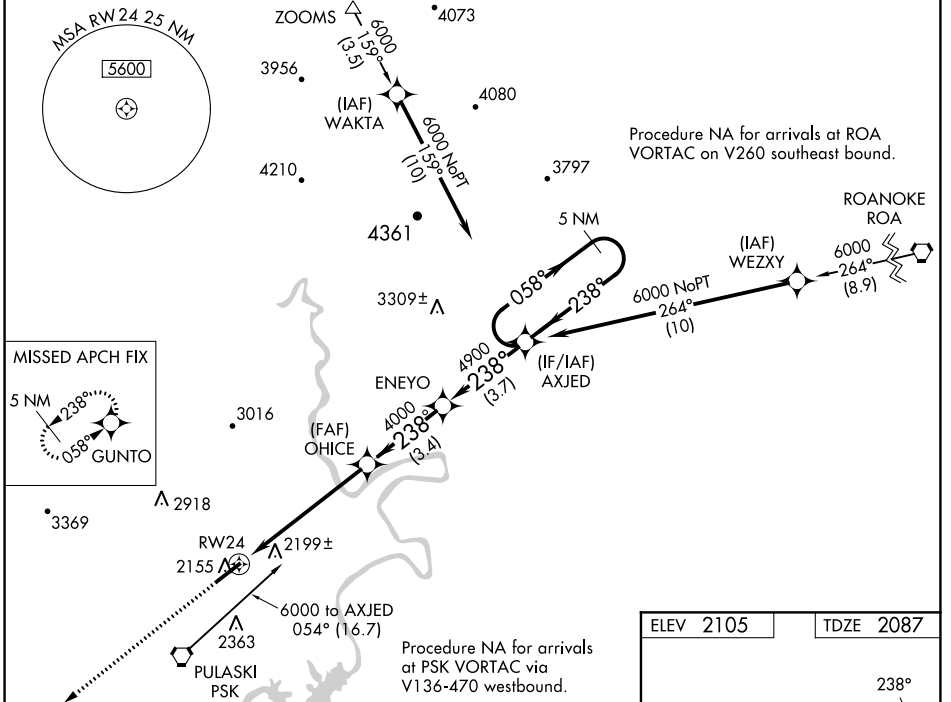
NEW RIVER VALLEY (PSK)

RNP APCH.

Baro-VNAV NA when using Blacksburg altimeter setting. For uncompensated Baro-VNAV systems, LNAV/VNAV NA below -19°C or above 45°C. When local altimeter setting not received, use Blacksburg altimeter setting and increase all DA 36 feet, and all MDA 40 feet; increase LNAV/VNAV all Cats and LNAV Cat C visibility ¼ SM. Circling NA for Cat D northwest of Rwy 6-24.

MISSED APPROACH: Climb to 5000 direct GUNTO and hold.

AWOS-3 127.375	ROANOKE APP CON 126.0 339.8	ROANOKE CLNC DEL 121.7	UNICOM 122.7 (CTAF)
--------------------------	---------------------------------------	----------------------------------	-------------------------------



CATEGORY	A	B	C	D
LPV DA	2337-1 250 (300-1)			
LNAV/VNAV DA	2502-1½ 415 (400-1½)			
LNAV MDA	2460-1 373 (400-1)		2460-1¼ 373 (400-1¼)	
CIRCLING	2620-1 515 (600-1)	2680-1 575 (600-1)	2780-2 675 (700-2)	2780-2¼ 675 (700-2¼)

NE-3, 08 AUG 2024 to 05 SEP 2024

NE-3, 08 AUG 2024 to 05 SEP 2024