

WAAS CH 99309 W01D	APP CRS 011°	Rwy ldg 9400 TDZE 296 Apt Elev 312
--	------------------------	---

RNAV (GPS) Y RWY 1L

WASHINGTON DULLES INTL (IAD)

RNP APCH - GPS.

▼ For uncompensated Baro-VNAV systems, LNAV/VNAV NA below -13°C or above 54°C. Use of FD or AP required during simultaneous operations. LNAV procedure NA during simultaneous operations. Simultaneous approach authorized. For inop ALS, increase LNAV/VNAV all Cats visibility to RVR 5500. Increase LNAV Cat C/D visibility to 1 3/8 SM.

ALSF-2

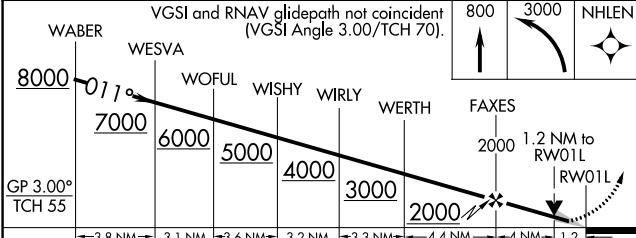
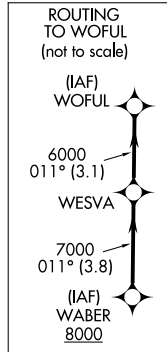
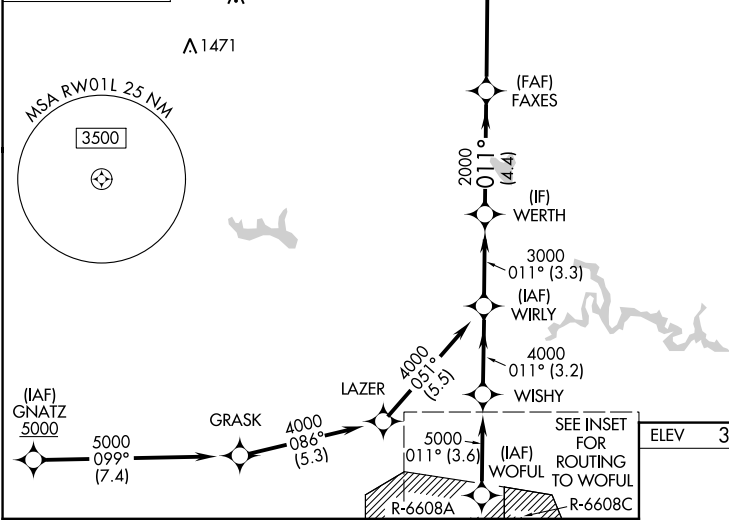


MISSED APPROACH: Climb to 800 then climbing left turn to 3000 direct NHLEN and hold.

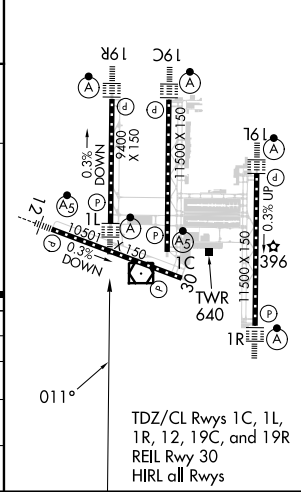
D-ATIS 134.85	POTOMAC APP CON 120.45 306.925 (241°-330°) 128.525 306.925 (091°-240°) 126.1 338.25 (331°-090°)	DULLES TOWER 120.1 317.8 (Rwy 1R/19L) 120.25 348.6 (Rwy 1C/19C) 134.425 348.6 (Rwys 1L/19R and 12/30)	GND CON 121.9 317.8 (EAST) 121.625 348.6 (WEST)
-------------------------	---	---	---



CLNC DEL 135.7 317.8	CPDLC
--------------------------------	-------



ELEV 312	D	TDZE 296
----------	----------	----------



WABER	WESVA	WOFUL	WISHY	WIRLY	WERTH	FAXES	NHLEN
8000	7000	6000	5000	4000	3000	2000	800
GP 3.00° TCH 55							
	3.1 NM	3.6 NM	3.2 NM	3.3 NM	4.4 NM	4 NM	1.2
CATEGORY	A		B		C		D
LPV DA			496/18		200 (200-1/2)		
LNAV/VNAV DA			658/35		362 (400-3/8)		
LNAV MDA	760/24		464 (500-1/2)		760/50		464 (500-1)
CIRCLING	940-1		628 (700-1)		940-1 3/4		1180-2 3/4
					628 (700-1 3/4)		868 (900-2 3/4)

NE-3, 08 AUG 2024 to 05 SEP 2024

NE-3, 08 AUG 2024 to 05 SEP 2024