

(OBENE3.OBENE) 18312

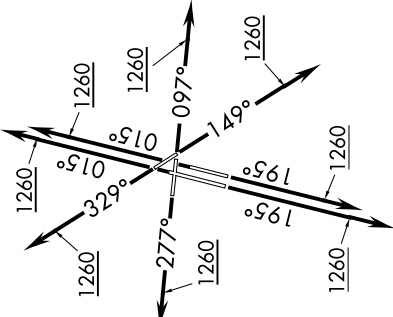
DUPAGE (DPA)

OBENE THREE DEPARTURE (RNAV) AL-5104 (FAA)

CHICAGO/WEST CHICAGO, ILLINOIS

TOP ALTITUDE:
3000

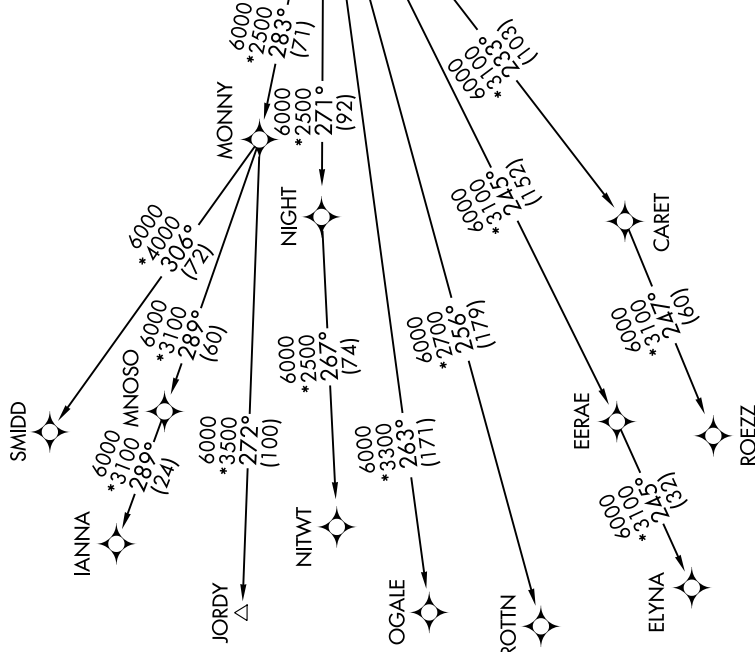
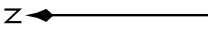
ATIS
132.075
GND CON
121.8
DUPAGE TOWER
120.9 257.8
CHICAGO DEP CON
133.5 349.0



OREOS
VERTICAL NAVIGATION
PLANNING INFORMATION
Expect 13000
OBENE
264° (23)

TAKEOFF MINIMUMS:
Rwys 2L/R, 10, 15, 20L/R, 28, 33:
Standard with minimum climb of 500' per NM to 1260.

NOTE: RADAR required.
NOTE: DME/DME/IRU or GPS required.
NOTE: RNAV 1.
NOTE: Turbojet departures maintain 250K until advised by ATC.



(NARRATIVE ON FOLLOWING PAGE)

NOTE: Chart not to scale.

OBENE THREE DEPARTURE (RNAV)
(OBENE3.OBENE) 08NOV18

CHICAGO/WEST CHICAGO, ILLINOIS
DUPAGE (DPA)