

WAAS CH <b>49232</b> <b>W02A</b>	APP CRS <b>017°</b>	Rwy Idg TDZE Apt Elev	<b>6000</b> <b>444</b> <b>444</b>
--	------------------------	-----------------------------	---

# RNAV (GPS) RWY 2

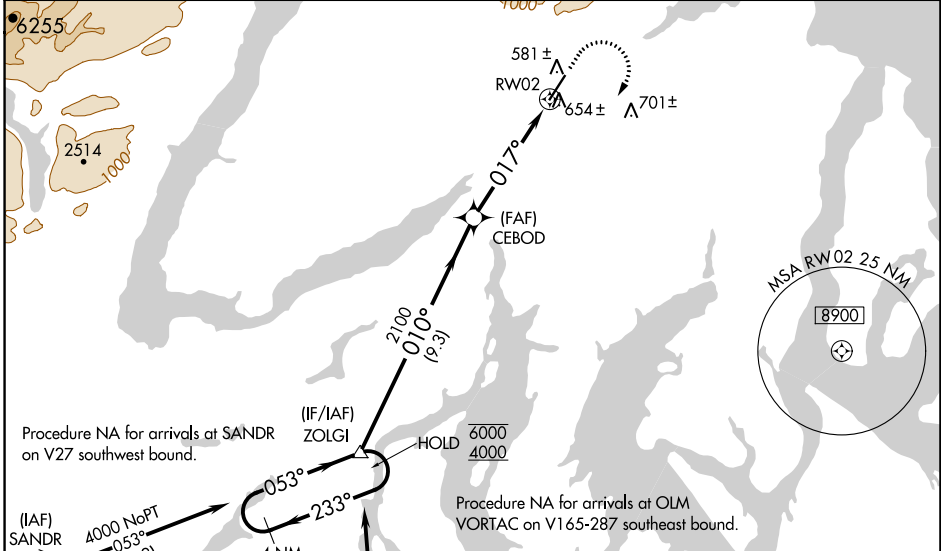
BREMERTON NTL (PWT)

RNP APCH - GPS.

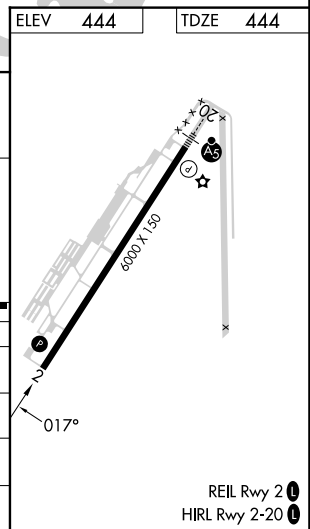
**⚠** Circling NA for Cats C and D west of Rwy 2-20.  
Rwy 2 helicopter visibility reduction below 3/4 SM NA.  
For uncompensated BARO-VNAV systems, LNAV/VNAV NA below -15°C above 54°C.

MISSED APPROACH: Climb to 1200 then climbing right turn to 4000 direct ZOLGI and hold, continue climb-in-hold to 4000.

AWOS-3PT <b>121.2</b>	SEATTLE APP CON <b>120.1 254.4 269.125</b>	CLNC DEL <b>127.1</b>	UNICOM <b>123.05 (CTAF)</b>
--------------------------	---	--------------------------	--------------------------------



4 NM Holding Pattern	VGSi and RNAV glidepath not coincident (VGSi Angle 3.00/TCH 43).		1200	4000	ZOLGI
	ZOLGI		↑	↷	△
6000 ← 233°	053° →	010°	2100	017°	
4000					
GP 3.00° TCH 56					
	9.3 NM	2.9 NM	2.1 NM		
CATEGORY	A	B	C	D	
LPV DA	772-1 328 (400-1)				
LNAV/VNAV DA	913-1½ 469 (500-1½)				
LNAV MDA	1160-1	716 (800-1)	1160-2	716 (800-2)	
<b>C</b> CIRCLING	1160-1	716 (800-1)	1160-2	1240-2½	796 (800-2½)



NW-1, 08 AUG 2024 to 05 SEP 2024

NW-1, 08 AUG 2024 to 05 SEP 2024