

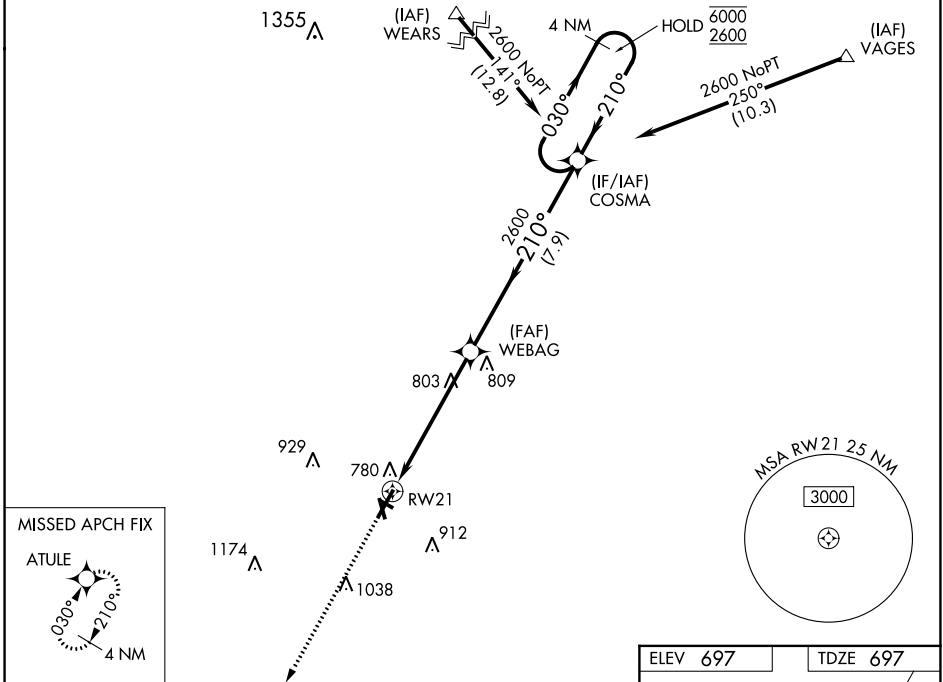
WAAS CH <b>58004</b> <b>W21A</b>	APP CRS <b>210°</b>	Rwy Idg <b>6006</b> TDZE <b>697</b> Apt Elev <b>697</b>
--	------------------------	---

# RNAV (GPS) RWY 21

VERMILION RGNL (D.V)

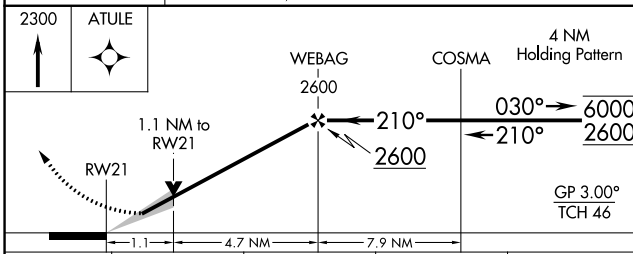
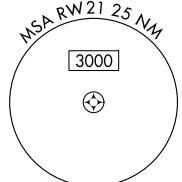
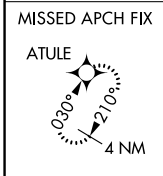
RNP APCH - GPS.		MALSRL	MISSED APPROACH: Climb to 2300 direct ATULE and hold.
<p>Circling NA to Rwy 12 and 30. For uncompensated Baro-VNAV systems, LNAV/VNAV NA below -16°C or above 54°C. For inop ALS, increase LPV all Cats visibility to 1 SM and LNAV Cat D visibility to 1 1/4 SM.</p>			

AWOS-3 <b>119.275</b>	CHAMPAIGN APP CON ★ <b>121.35 285.65</b>	CLNC DEL <b>121.7</b>	UNICOM <b>122.7 (CTAF)</b>
--------------------------	---	--------------------------	-------------------------------



EC-3, 08 AUG 2024 to 05 SEP 2024

EC-3, 08 AUG 2024 to 05 SEP 2024



CATEGORY	A	B	C	D
LPV DA		990-1/2	293 (300-1/2)	
LNAV/VNAV DA		1069-3/4	372 (400-3/4)	
LNAV MDA	1080-1/2	383 (400-1/2)		1080-1 383 (400-1)
CIRCLING	1160-1	463 (500-1)	1240-1 1/2 543 (600-1 1/2)	1340-2 643 (700-2)

