

APP CRS 345°	Rwy Idg 3999
	TDZE 667
	Apt Elev 697

RNAV (GPS) RWY 34

VERMILION RGNL (DNTV)

RNP APCH - GPS.

▼ Circling NA to Rwy 12 and 30.
▲ Rwy 34 helicopter visibility reduction below 3/4 SM NA.

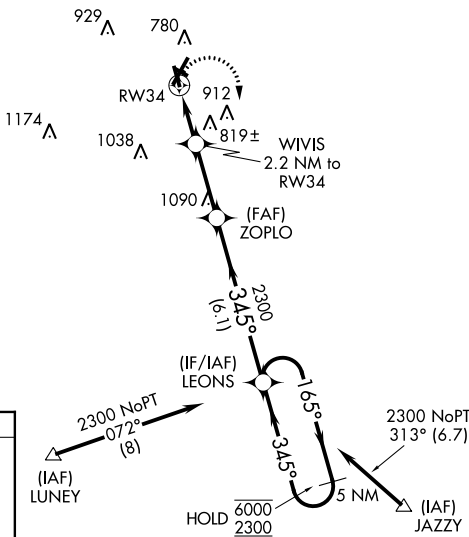
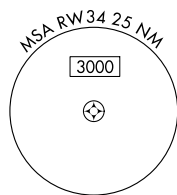
MISSED APPROACH: Climbing right turn to 2300 direct LEONS and hold.

AWOS-3
119.275

CHAMPAIGN APP CON *
121.35 285.65

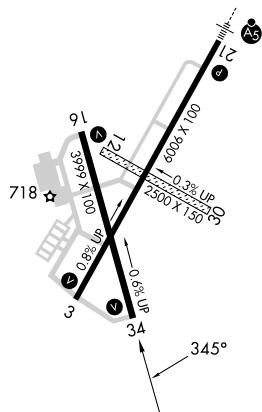
CLNC DEL
121.7

UNICOM
122.7 (CTAF)

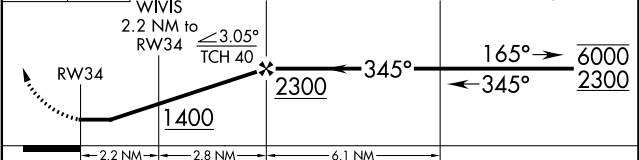


1999
▲

ELEV 697	TDZE 667
HIRL Rwy 3-21	
MIRL Rwy 16-34	
REIL Rwy 16 and 34	



2300 LEONS VGSI and descent angles not coincident (VGSI Angle 3.00/TCH 14).
 5 NM Holding Pattern



CATEGORY	A	B	C	D
LNAV MDA	1080-1	413 (400-1)	1080-1 1/4	413 (400-1 1/4)
CIRCLING	1160-1	463 (500-1)	1240-1 1/2	1340-2
			543 (600-1 1/2)	643 (700-2)