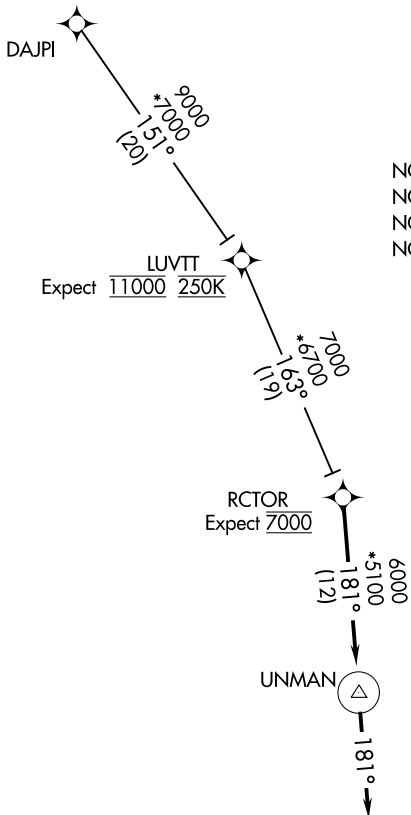


# RCTOR TWO ARRIVAL (RNAV)

GREER, SOUTH CAROLINA

GREER APP CON  
 118.8 270.275 (WEST)  
 119.4 350.2 (EAST)  
 GMU ATIS ★  
 127.075  
 GSP ATIS  
 134.25



- NOTE: RADAR required.
- NOTE: RNAV 1.
- NOTE: DME/DME/IRU or GPS required.
- NOTE: Turbojet and Turboprop aircraft only.

LUVTT  
 Expect 11000 250K

RCTOR  
 Expect 7000

UNMAN

SPARTANBURG DOWNTOWN MEHL/  
 SIMPSON FLD

GREENVILLE  
 DOWNTOWN

GREENVILLE  
 SPARTANBURG  
 INTL

DONALDSON  
 FLD

NOTE: Chart not to scale.

## ARRIVAL ROUTE DESCRIPTION

### DAJPI TRANSITION (DAJPI.RCTOR2)

From RCTOR on track 181° to UNMAN, then on heading 181°. Expect RADAR vectors to final approach course.

# RCTOR TWO ARRIVAL (RNAV)

GREER, SOUTH CAROLINA