

SAN CLEMENTE ISLAND, CALIFORNIA

HI-TACAN Z RWY 24

SAN CLEMENTE ISLAND NALF (FREDERICK SHERMAN FLD) (KNUC)

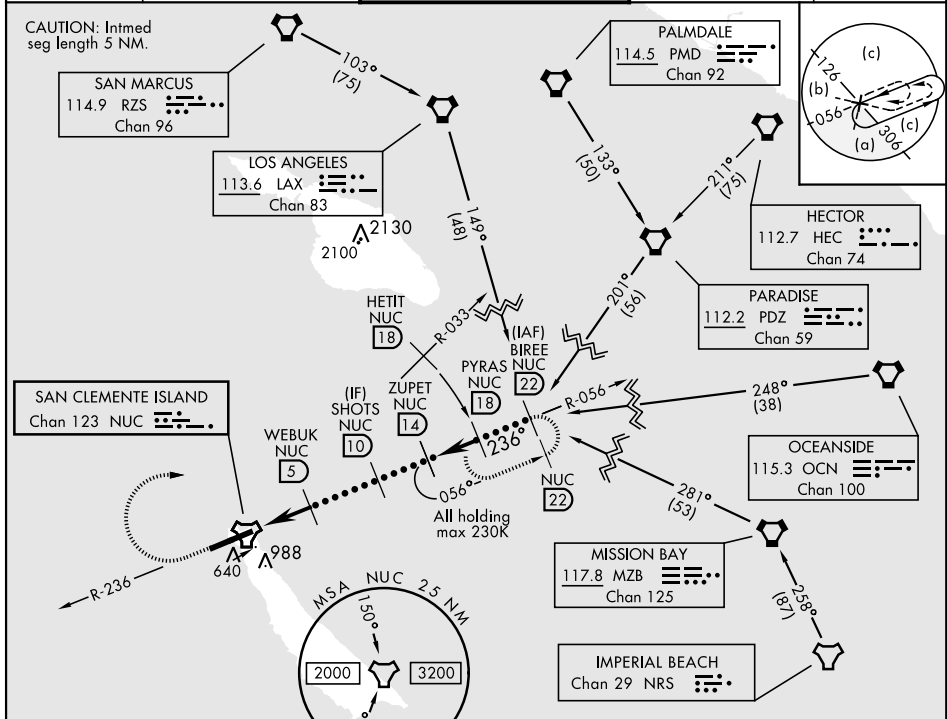
TACAN NUC Chan 123	APCH CRS 236°	Rwy Idg TDZE 9301 184	Arprt Elev 184
-----------------------	------------------	-----------------------------	-------------------

AL-5126 [USN]

* Circling not authorized S of Rwy 6-24.

MISSED APPROACH: Climb to 1500 via NUC TACAN R-236 then climbing right turn to 4000 via NUC R-033 to HETIT. Then arc NE of the NUC TACAN via the 18 DME arc to PYRAS and hold.

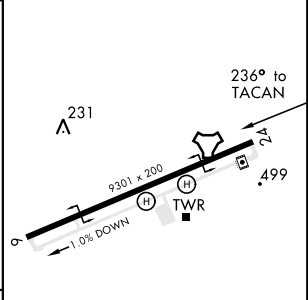
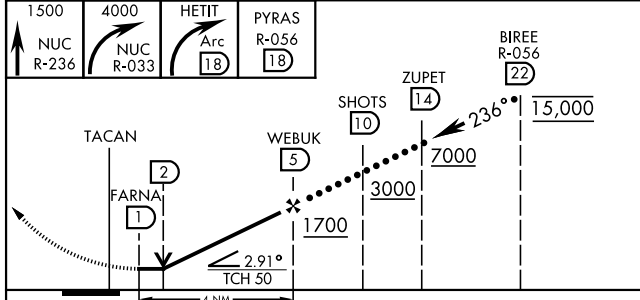
ATIS ★ 268.6	SAN CLEMENTE APP CON 127.05 292.15	SAN CLEMENTE ISLAND TOWER ★ 126.75 278.8	GND CON 119.55 251.05	ASR/PAR
-----------------	---------------------------------------	---	--------------------------	---------



SW-3, 08 AUG 2024 to 05 SEP 2024

SW-3, 08 AUG 2024 to 05 SEP 2024

EMERG SAFE ALT 100 NM 12,100	ELEV 184	TDZE 184
------------------------------	----------	----------



CATEGORY	C	D	E
S-24	780-1 $\frac{3}{4}$	596 (600-1 $\frac{3}{4}$)	
CIRCLING*	780-1 $\frac{3}{4}$ 596 (600-1 $\frac{3}{4}$)	780-2 596 (600-2)	

REIL Rwy 6
 REIL Rwy 24
 HIRL Rwy 6-24

SAN CLEMENTE ISLAND, CALIFORNIA
Orig 24FEB22

33°01'N-118°35'W

SAN CLEMENTE ISLAND NALF (KNUC)
(FREDERICK SHERMAN FLD)

HI-TACAN Z RWY 24