

SAN CLEMENTE ISLAND, CALIFORNIA

RNAV (GPS) RWY 24

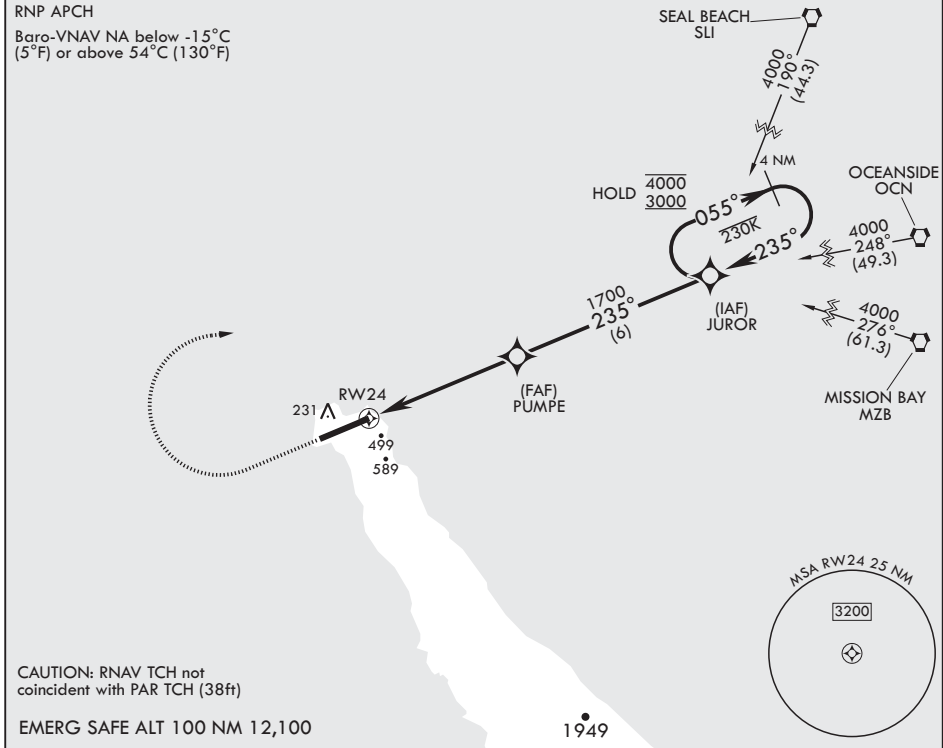
WAAS CH 87812 W24A	APCH CRS 235°	Rwy ldg 9301 TDZE 184 Arprt Elev 184
--	-------------------------	---

AL-5126 (USN)

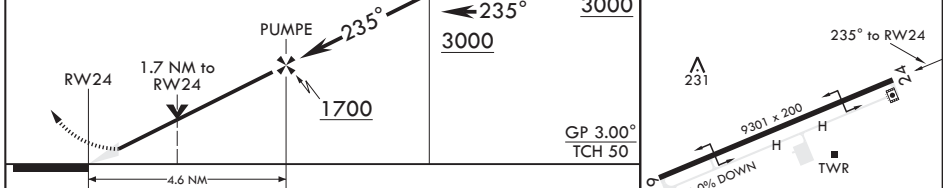
SAN CLEMENTE ISLAND NALF (FREDERICK SHERMAN FLD) (KNUC)

⚠ * Circling not authorized S of Rwy 6-24. MISSED APPROACH: Climb to 1500, then climbing right turn to 3000 direct JUROR and hold.

ATIS* 268.6	SAN CLEMENTE APP CON 127.05 292.15	TOWER* 126.75 278.8	GND CON 119.55 251.05	ASR/PAR
-----------------------	--	-------------------------------	---------------------------------	---------



1500 crs 235°	3000	JUROR	ELEV 184	TDZE 184
---------------------	------	-------	----------	----------



CATEGORY	A		B		C		D	
LPV DA	384-3/4		200		(200-3/4)			
LNAV/VNAV DA	632-1 3/8 448 (500-1%)	641-1 3/8 457 (500-1%)	649-1 3/8 465 (500-1%)	661-1 3/8 477 (500-1%)				
LNAV MDA	760-1	576 (600-1)	760-1 3/8	576 (600-1%)				
C CIRCLING*	780-1	596 (600-1)	780-1 3/8 596 (600-1%)	780-2 596 (600-2)				

REIL Rwy 6
REIL Rwy 24
HIRL all Rwy's

SAN CLEMENTE ISLAND, CALIFORNIA
Amdt 5 24FEB22

SAN CLEMENTE ISLAND NALF (FREDERICK SHERMAN FLD) (KNUC)
33°01'N - 118°35'W

RNAV (GPS) RWY 24

SW-3, 08 AUG 2024 to 05 SEP 2024

SW-3, 08 AUG 2024 to 05 SEP 2024