

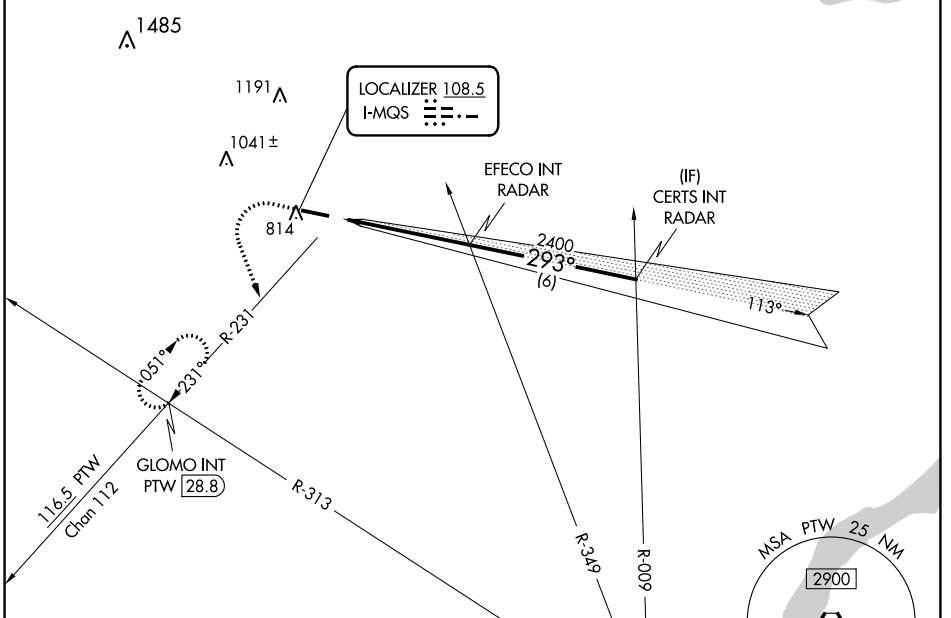
LOC I-MQS <b>108.5</b>	APP CRS <b>293°</b>	Rwy ldg TDZE Apt Elev	<b>5400</b> <b>660</b> <b>660</b>
---------------------------	------------------------	-----------------------------	---

# ILS or LOC RWY 29

CHESTER COUNTY G O CARLSON (MQS)

RADAR required for procedure entry.		MISSED APPROACH: Climb to 3000 then climbing left turn to 3000 on heading 170° and PTW R-231 to GLOMO INT/PTW 28.8 DME and hold, continue climb-in-hold to 3000.	
-------------------------------------	--	--	--

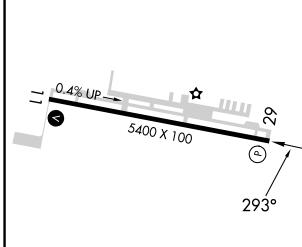
AWOS-3 <b>126.25</b>	PHILADELPHIA APP CON <b>124.35 319.15</b>	CLNC DEL <b>125.6</b>	UNICOM <b>122.7 (CTAF)</b>
-------------------------	--	--------------------------	-------------------------------



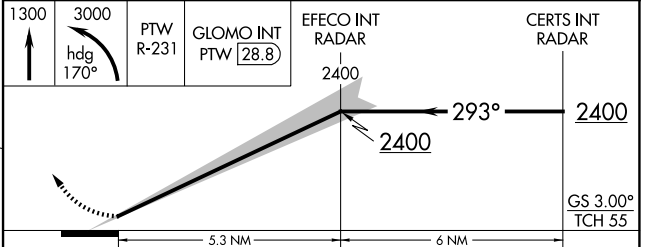
NE-4, 08 AUG 2024 to 05 SEP 2024

NE-4, 08 AUG 2024 to 05 SEP 2024

ELEV 660	TDZE 660
----------	----------



HIRL Rwy 11-29	REIL Rwys 11 and 29
FAF to MAP 5.3 NM	
Knots	60 90 120 150 180
Min:Sec	5:18 3:32 2:39 2:07 1:46



CATEGORY	A	B	C	D
S-ILS 29		910-3/4	250 (300-3/4)	
S-LOC 29		1040-1	380 (400-1)	
CIRCLING	1140-1 480 (500-1)	1240-1 580 (600-1)	1260-1 1/2 600 (600-1 1/2)	1420-2 1/2 760 (800-2 1/2)