

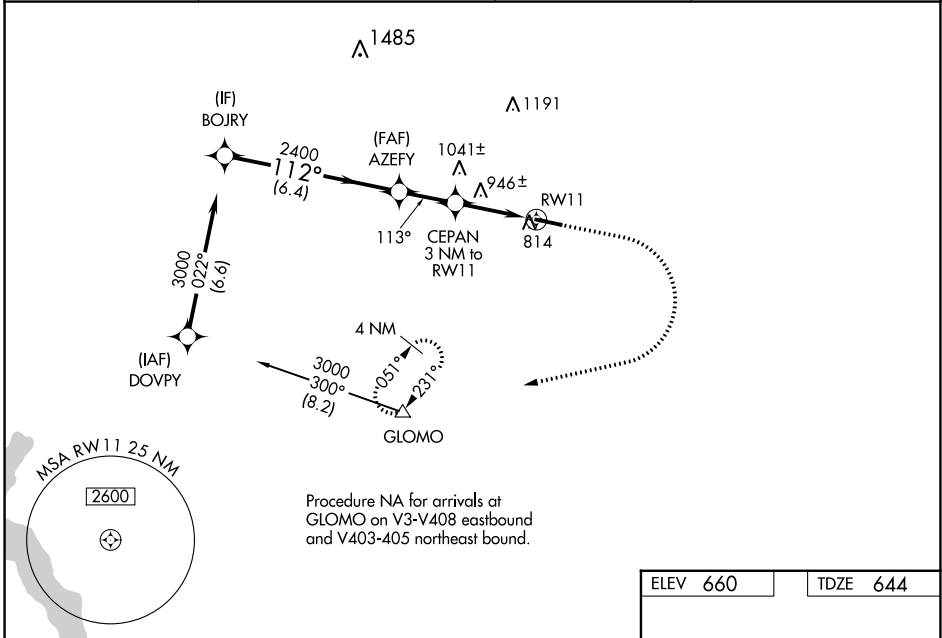
WAAS CH <b>63006</b> <b>W11A</b>	APP CRS <b>113°</b>	Rwy Idg TDZE Apt Elev	<b>5400</b> <b>644</b> <b>660</b>
--	------------------------	-----------------------------	---

# RNAV (GPS) RWY 11

CHESTER COUNTY G O CARLSON (MQS)

RNP APCH - GPS.	<p>MISSED APPROACH: Climb to 1300 then climbing right turn to 3000 direct GLOMO and hold, continue climb-in-hold to 3000.</p>
<p><b>⚠</b> Helicopter visibility reduction below 3/4 SM NA. For uncompensated Baro-VNAV systems, LNAV/VNAV NA below -16°C or above 54°C.</p>	

AWOS-3 <b>126.25</b>	PHILADELPHIA APP CON <b>124.35 319.15</b>	CLNC DEL <b>125.6</b>	UNICOM <b>122.7 (CTAF) 0</b>
-------------------------	--	--------------------------	---------------------------------



NE-4, 08 AUG 2024 to 05 SEP 2024

NE-4, 08 AUG 2024 to 05 SEP 2024

VGSi and RNAV glidepath not coincident (VGSi Angle 3.00/TCH 52).		1300	3000	GLOMO
BOJRY	AZEFY	CEPAN 3 NM to RW11		
3000	2400	1700		
GP 3.20°				
TCH 55				
	6.4 NM	2.1 NM	1.4	1.6
CATEGORY	A	B	C	D
LPV DA	973-1		329 (400-1)	
LNAV/VNAV DA	1091-1 3/8		447 (500-1 3/8)	
LNAV MDA	1200-1	556 (600-1)	1200-1 3/8	556 (600-1 3/8)
CIRCLING	1200-1 540 (600-1)	1240-1 580 (600-1)	1260-1 3/8 600 (600-1 3/8)	1420-2 1/2 760 (800-2 1/2)

