

WAAS CH 73014 W03A	APP CRS 034°	Rwy Idg TDZE Apt Elev	5999 624 625
--	------------------------	-----------------------------	---

RNAV (GPS) RWY 3

MENOMINEE RGNL (MNM)

RNP APCH.

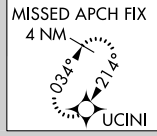
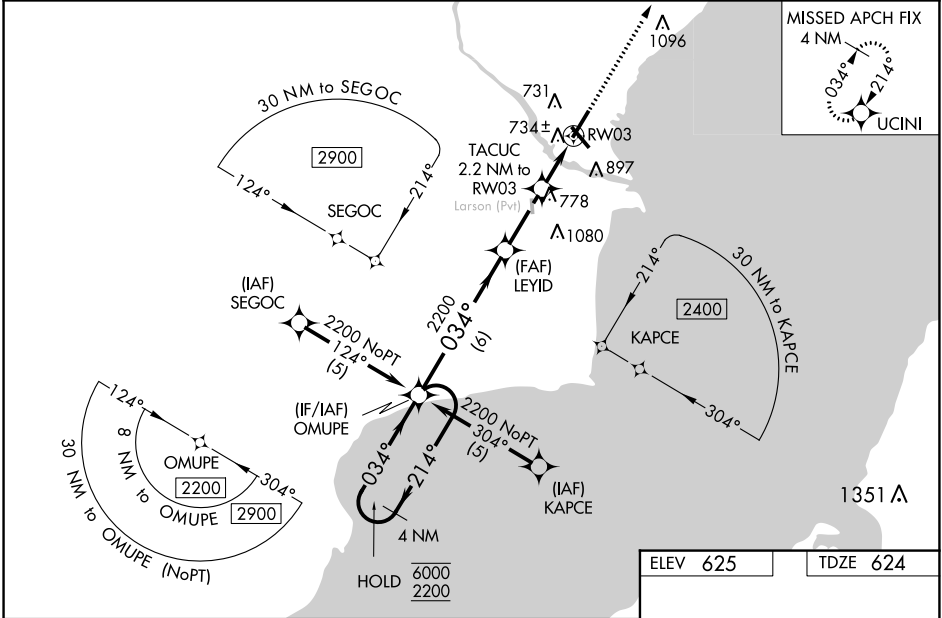
⚠ Circling Rwy 14, 32 NA at night. Baro-VNAV and VDP NA when using Sturgeon Bay altimeter setting. For uncompensated Baro-VNAV systems, LNAV/VNAV NA below -16°C or above 54°C. When local altimeter setting not received, use Sturgeon Bay altimeter setting and increase all DA/MDA 60 feet, increase Circling Cat C/D visibility ½ SM. For inop MALSRL when using Sturgeon Bay altimeter setting increase LNAV MDA visibility Cat C/D to 1¾. Inop table does not apply to LPV and LNAV/VNAV all Cats and LNAV MDA Cats A/B.

MALSRL



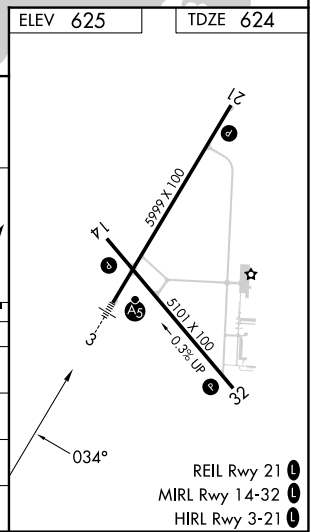
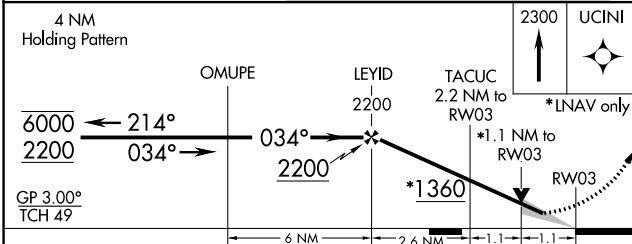
MISSED APPROACH:
Climb to 2300 direct UCINI and hold.

AWOS-3PT 121.45	GREEN BAY APP CON ★ 120.3 338.2	UNICOM 122.8 (CTAF)
---------------------------	---	-------------------------------



EC-1, 08 AUG 2024 to 05 SEP 2024

EC-1, 08 AUG 2024 to 05 SEP 2024



CATEGORY	A	B	C	D
LPV DA		824-1	200 (200-1)	
LNAV/VNAV DA		1150-1½	526 (600-1)	
LNAV MDA		1000-1	376 (400-1)	
C CIRCLING	1 200-1	575 (600-1)	1 200-1½ 575 (600-1½)	1 380-2½ 755 (800-2½)