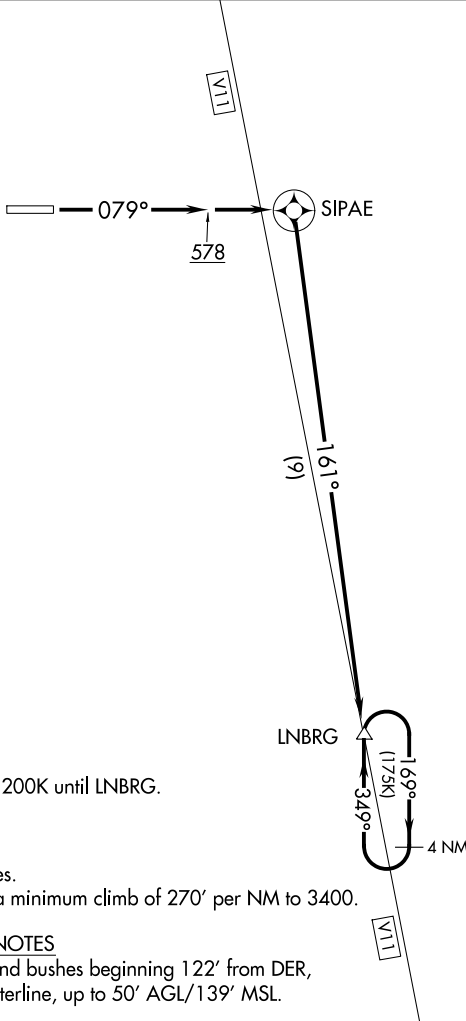


HCF CENTER
118.45 278.3
CLNC DEL
122.3
CTAF
122.9



NOTE: GPS required.
NOTE: RNAV 1.
NOTE: Do not exceed 200K until LNBRG.

TAKEOFF MINIMUMS

Rwy 26: NA - Obstacles.
Rwy 8: Standard with a minimum climb of 270' per NM to 3400.

TAKEOFF OBSTACLE NOTES

Rwy 8: Multiple trees and bushes beginning 122' from DER, 74' right of centerline, up to 50' AGL/139' MSL.

NOTE: Chart not to scale

DEPARTURE ROUTE DESCRIPTION

TAKEOFF RUNWAY 8: Climb heading 079° to 578 then direct SIPAE, then on track 161° to LNBRG, thence. . . .

. . . .climb in holding (if required) to cross LNBRG at or above 5400 before proceeding on assigned route.

PAC, 11 JUL 2024 to 05 SEP 2024

PAC, 11 JUL 2024 to 05 SEP 2024