

| | | | |
|--|------------------------|-----------------------------|---|
| VORTAC OSH 116.75 Chan 114 (Y) | APP CRS 165° | Rwy Idg TDZE Apt Elev | 5941 791 808 |
|--|------------------------|-----------------------------|---|

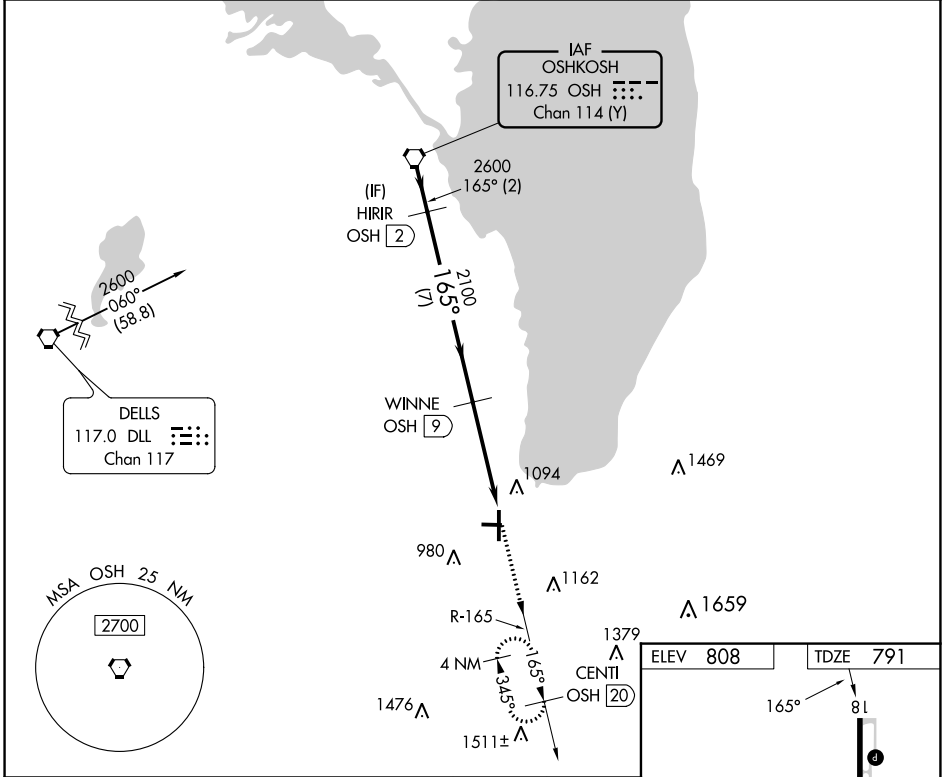
VOR RWY 18

FOND DU LAC COUNTY (F.L.D)

⚠ Helicopter visibility reduction below 3/4 SM NA. When local altimeter setting not received, use Oshkosh altimeter setting: increase all MDA 40 feet; increase S-18 Cat C/D visibility 1/8 mile, and increase Circling Cat C/D visibility 1/4 mile. Night landing: Rwy 9, 27 NA. VDP NA when using Oshkosh altimeter setting. DME required.

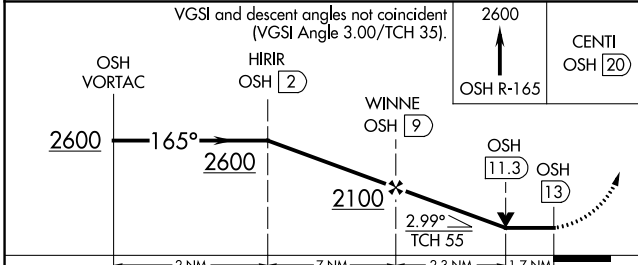
MISSED APPROACH: Climb to 2600 on OSH VORTAC R-165 to CENTI/OSH 20 DME and hold.

| | | |
|----------------------|---|----------------------------------|
| ASOS 134.0 | MILWAUKEE APP CON 127.0 263.075 | UNICOM 123.05 (CTAF) 0 |
|----------------------|---|----------------------------------|



EC-3, 08 AUG 2024 to 05 SEP 2024

EC-3, 08 AUG 2024 to 05 SEP 2024



| | |
|----------|----------|
| ELEV 808 | TDZE 791 |
|----------|----------|

| CATEGORY | A | B | C | D |
|-------------------|--------|-------------|-----------------------|-------------------------------|
| S-18 | 1360-1 | 569 (600-1) | 1360-1 5/8 | 569 (600-1 5/8) |
| C CIRCLING | 1400-1 | 592 (600-1) | 1520-2 712 (800-2) | 1520-2 1/4 712 (800-2 1/4) |

REIL Rwy 18 **0**
MIRL Rwy 9-27 **1**
HIRL Rwy 18-36 **1**