

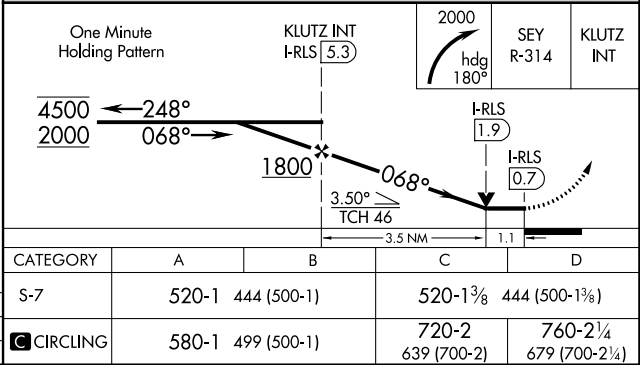
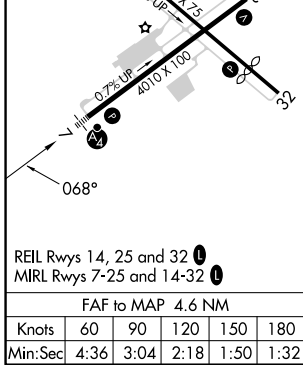
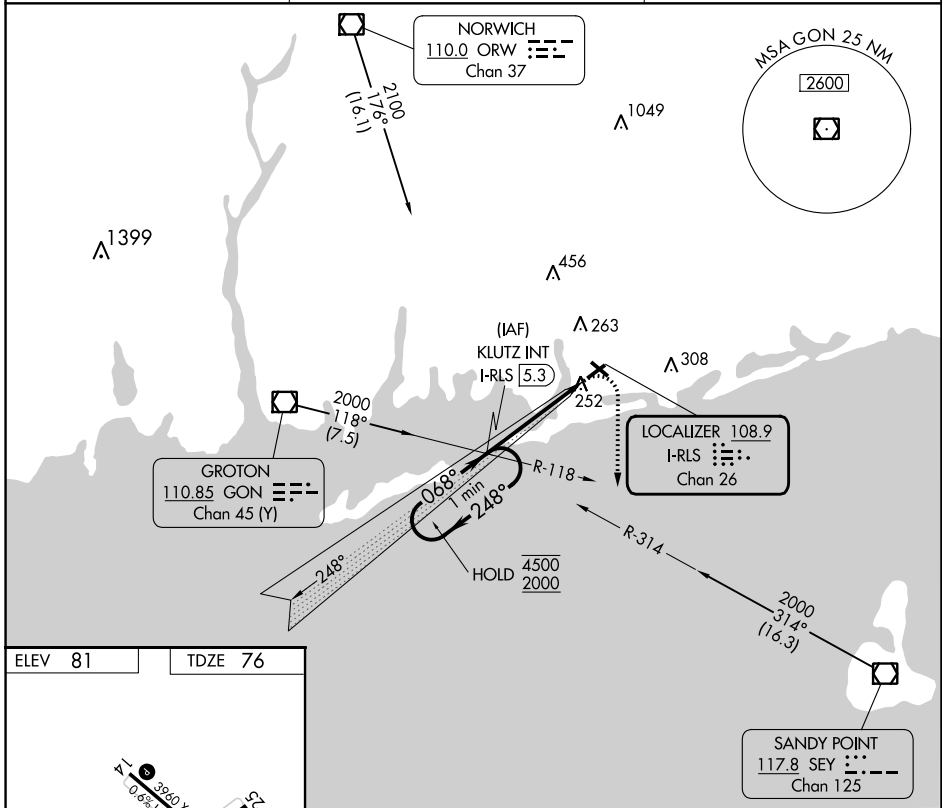
LOC/DME I-RLS 108.9 Chan 26	APP CRS 068°	Rwy Idg TDZE Apt Elev	4010 76 81
--	------------------------	-----------------------------	---------------------------------------

LOC RWY 7

WESTERLY STATE (WST)

<p>NA Circling to Rwy 14 and 32 NA at night. Rwy 7 helicopter visibility reduction below 3/4 SM NA. Inop table does not apply.</p>	<p>MALSF</p>	<p>MISSED APPROACH: Climbing right turn to 2000 on heading 180° and SEY R-314 to KLUTZ INT/I-RLS 5.3 DME and hold, continue climb-in-hold to 2000.</p>
---	---------------------	---

ASOS 132.375	PROVIDENCE APP CON * 119.45 319.2	UNICOM 123.0 (CTAF) 0
------------------------	---	---------------------------------



NE-1, 08 AUG 2024 to 05 SEP 2024

NE-1, 08 AUG 2024 to 05 SEP 2024