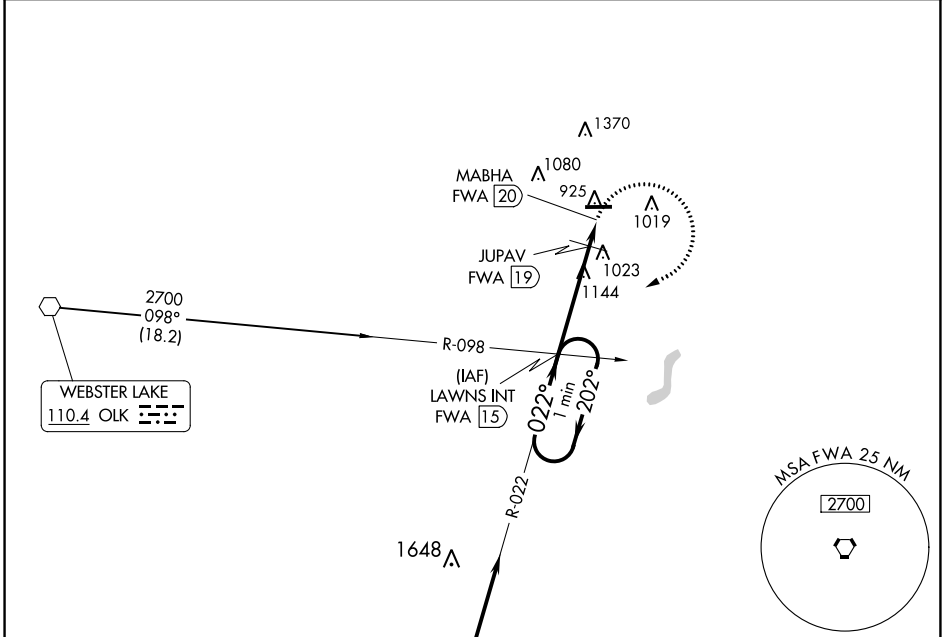


VORTAC FWA 117.8 Chan 125	APP CRS 022°	Rwy Idg TDZE N/A	N/A
		Apt Elev	880

VOR-A
DE KALB COUNTY (GWB)

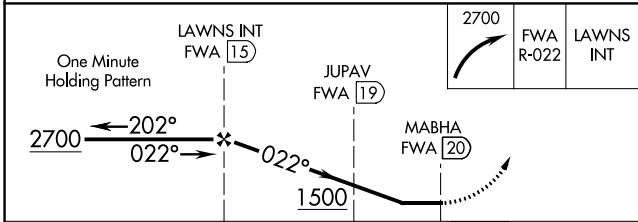
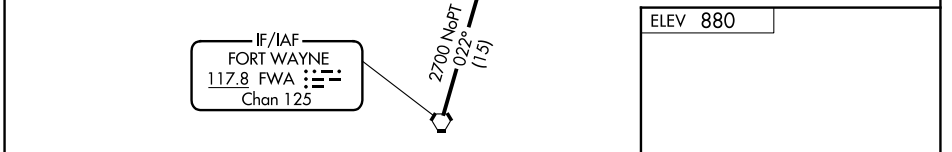
▽
▲ MISSED APPROACH: Climbing right turn to 2700 on FWA R-022 to LAWNS INT/FWA 15 DME and hold.

AWOS-3 124.15	FORT WAYNE APP CON 127.2 284.6	CLNC DEL 126.6	UNICOM 123.0 (CTAF)
-------------------------	--	--------------------------	-------------------------------



EC-2, 08 AUG 2024 to 05 SEP 2024

EC-2, 08 AUG 2024 to 05 SEP 2024



ELEV 880

5000 X 100

27

022°

REIL Rwy 9 and 27
MIRL Rwy 9-27

FAF to MAP 5 NM

Knots	60	90	120	150	180
Min:Sec	5:00	3:20	2:30	2:00	1:40

CATEGORY	A	B	C	D
C CIRCLING	1500-1 620 (700-1)	1560-1 680 (700-1)	1720-2½ 840 (900-2½)	1720-2¾ 840 (900-2¾)
JUPAV FIX MINIMUMS				
C CIRCLING	1360-1 480 (500-1)	1560-1 680 (700-1)	1720-2½ 840 (900-2½)	1720-2¾ 840 (900-2¾)