

APP CRS <b>076°</b>	Rwy Idg TDZE Apt Elev	<b>2247</b> <b>523</b> <b>523</b>
------------------------	-----------------------------	---

# RNAV (GPS) RWY 8

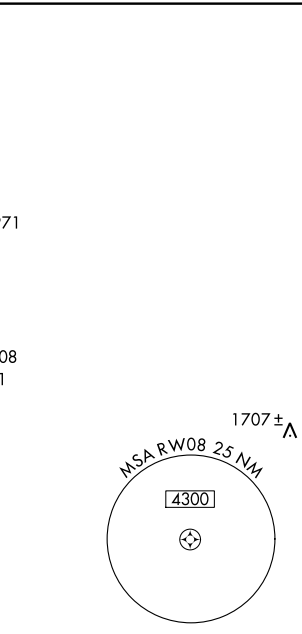
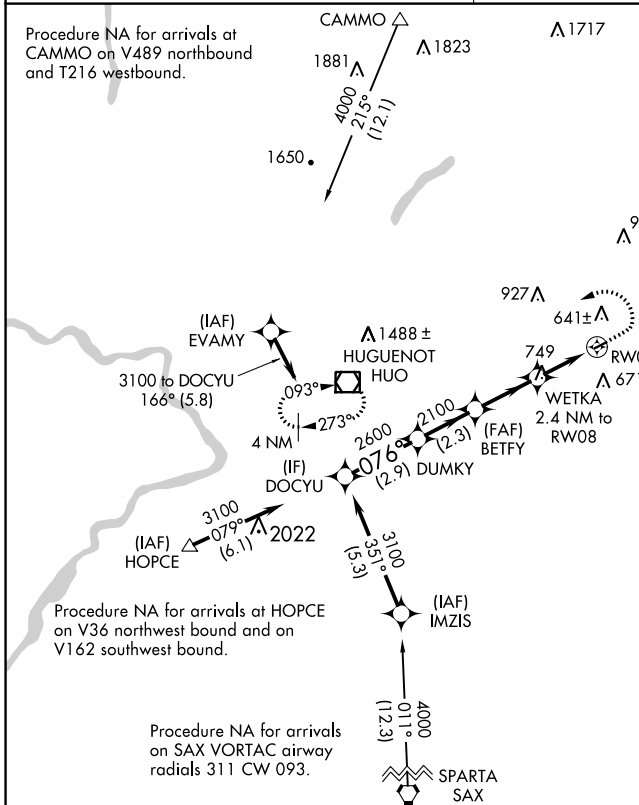
RANDALL (Ø6N)

RNP APCH.  
 ▼ Procedure NA at night. Use Newburgh altimeter setting, when not received, use Montgomery altimeter setting.  
 ▲ NA Rwy 8 helicopter visibility reduction below 1 SM NA.

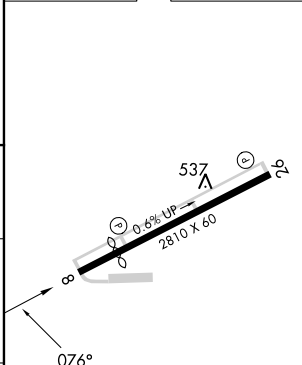
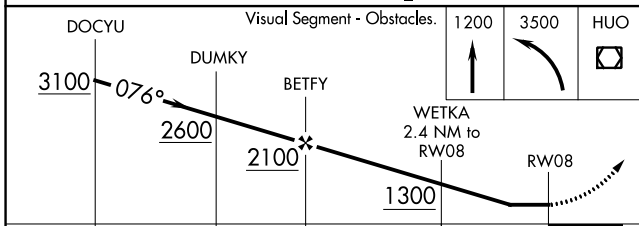
MISSED APPROACH: Climb to 1200 then climbing left turn to 3500 direct HUO VOR/DME and hold, continue climb-in-hold to 3500.

NEW YORK APP CON  
**132.75 363.1**

UNICOM  
**122.8 (CTAF) 0**



ELEV 523	TDZE 523
----------	----------



CATEGORY	A	B	C	D
LNAV MDA	1140-1 617 (700-1)		NA	
CIRCLING	1140-1 617 (700-1)		NA	

MIRL Rwy 8-26 0

NE-2, 08 AUG 2024 to 05 SEP 2024

NE-2, 08 AUG 2024 to 05 SEP 2024