

| | | | |
|--|------------------------|-----------------------------|---|
| WAAS CH 86928 W17A | APP CRS 147° | Rwy Idg TDZE Apt Elev | 3695 379 388 |
|--|------------------------|-----------------------------|---|

RNAV (GPS) RWY 17

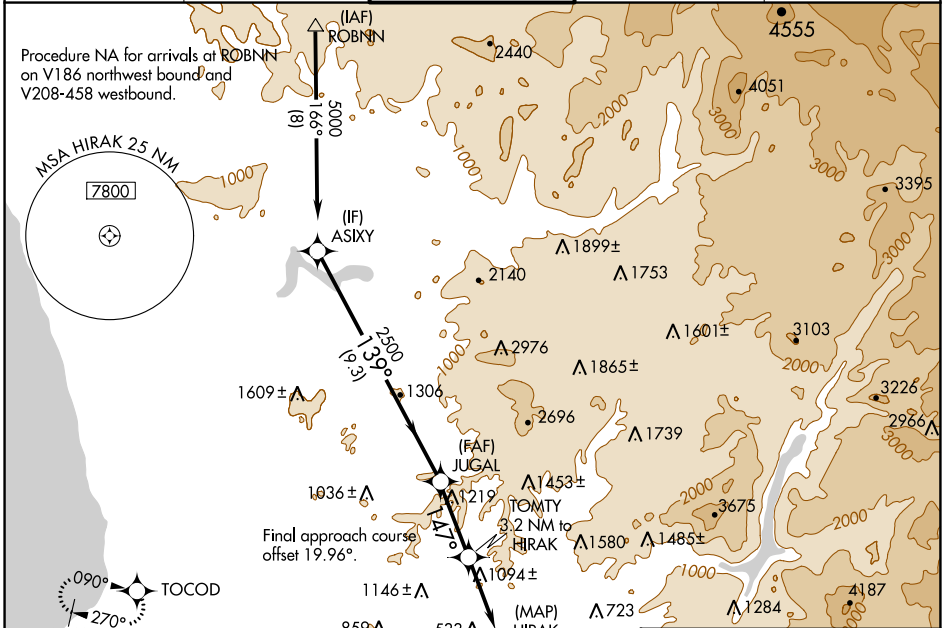
GILLESPIE FLD (SEE)

RNP APCH - GPS.

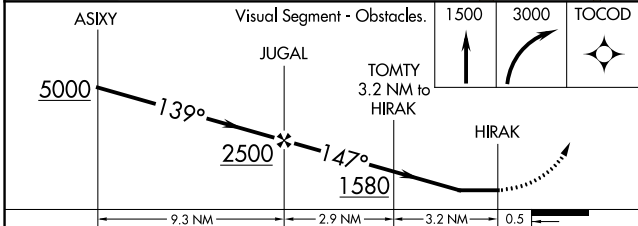
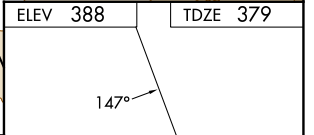
⚠ Circling NA northeast of Rwy 17 and 27R. When local altimeter setting not received, use Miramar MCAS altimeter setting and increase all MDA 40 feet. Rwy 17 helicopter visibility reduction below 1 SM NA. Circling Rwy 27R, 35 NA at night.

MISSED APPROACH: Climb to 1500 then climbing right turn to 3000 direct TOCOD and hold.

| | | | | |
|-----------------------|--|---|-------------------------|--------------------------|
| ATIS 125.45 | SOCAL APP CON 124.35 279.625 | GILLESPIE TOWER* 120.7 (CTAF) 257.8 | GND CON 121.7 | CLNC DEL 125.1 |
|-----------------------|--|---|-------------------------|--------------------------|



| | |
|----------|----------|
| ELEV 388 | TDZE 379 |
|----------|----------|



| CATEGORY | A | B | C | D |
|----------|---------------------------|---------------------------|--------|---------------|
| LP MDA | 1360-1¼ 981 (1000-1¼) | 1360-1½ 981 (1000-1½) | 1360-3 | 981 (1000-3) |
| LNAV MDA | 1380-1¼ 1001 (1000-1¼) | 1380-1½ 1001 (1000-1½) | 1380-3 | 1001 (1000-3) |
| CIRCLING | 1440-1¼ 1052 (1100-1¼) | 1440-1½ 1052 (1100-1½) | 1940-3 | 1552 (1600-3) |

MIRL Rwy 9L-27R and 17-35
REIL Rwy 27R

SW-3, 08 AUG 2024 to 05 SEP 2024

SW-3, 08 AUG 2024 to 05 SEP 2024