

APP CRS	Rwy Idg	3598
039°	TDZE	472
	Apf Elev	482

RNAV (GPS) RWY 4

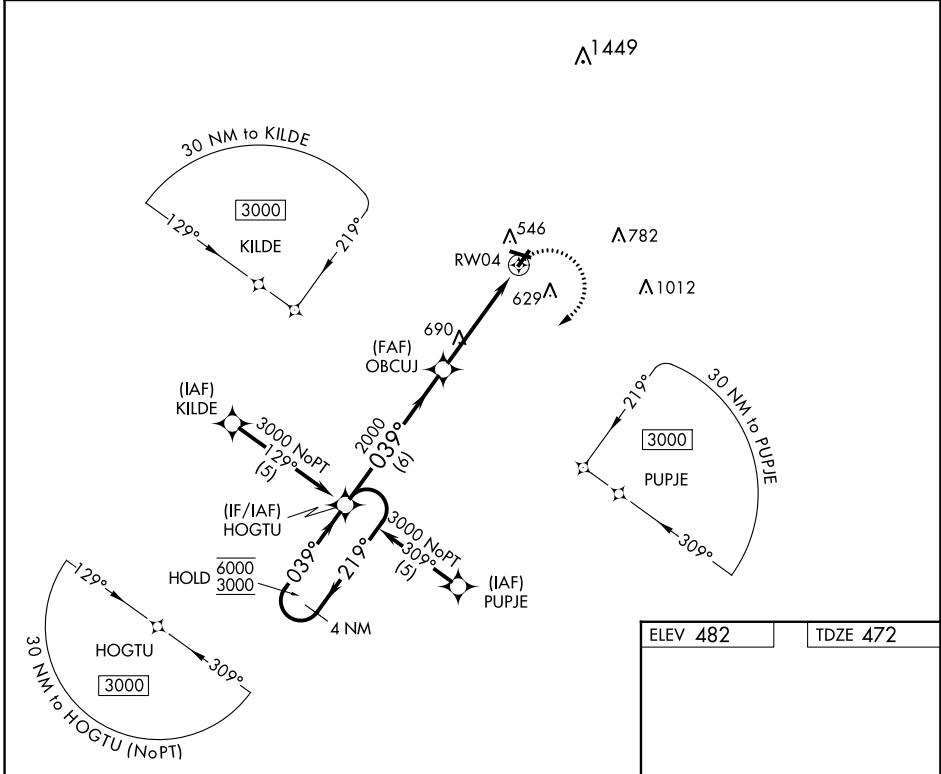
OLNEY-NOBLE (OLY)

RNP APCH.

▼ Rwy 4 helicopter visibility reduction below 3/4 SM NA. When local altimeter setting not received, use Evansville Rgnl altimeter setting and increase all MDA 140 feet and increase LNAV Cat C/D and Circling Cat C/D visibility 1/2 mile.

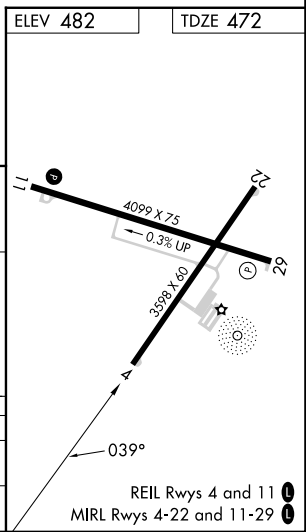
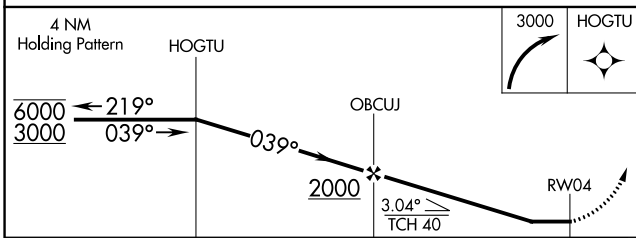
MISSED APPROACH:
Climbing right turn to 3000 direct HOGTU and hold.

AWOS-3 119.275	KANSAS CITY CENTER 124.3 269.15	UNICOM 123.0 (CTAF) 0
--------------------------	---	---------------------------------



EC-3, 08 AUG 2024 to 05 SEP 2024

EC-3, 08 AUG 2024 to 05 SEP 2024



CATEGORY	A	B	C	D
LNAV MDA	940-1	468 (500-1)	940-1 3/8	468 (500-1 3/8)
C CIRCLING	960-1	478 (500-1)	960-1 1/2 478 (500-1 1/2)	1180-2 1/4 698 (700-2 1/4)