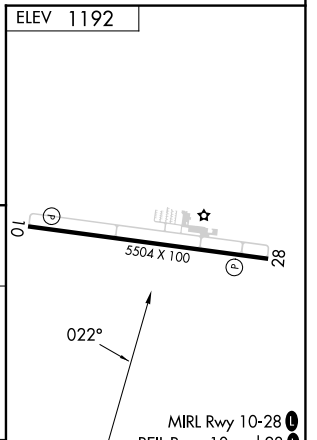
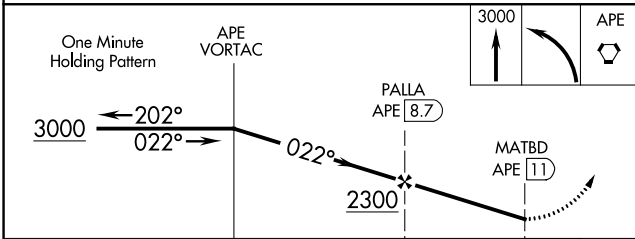
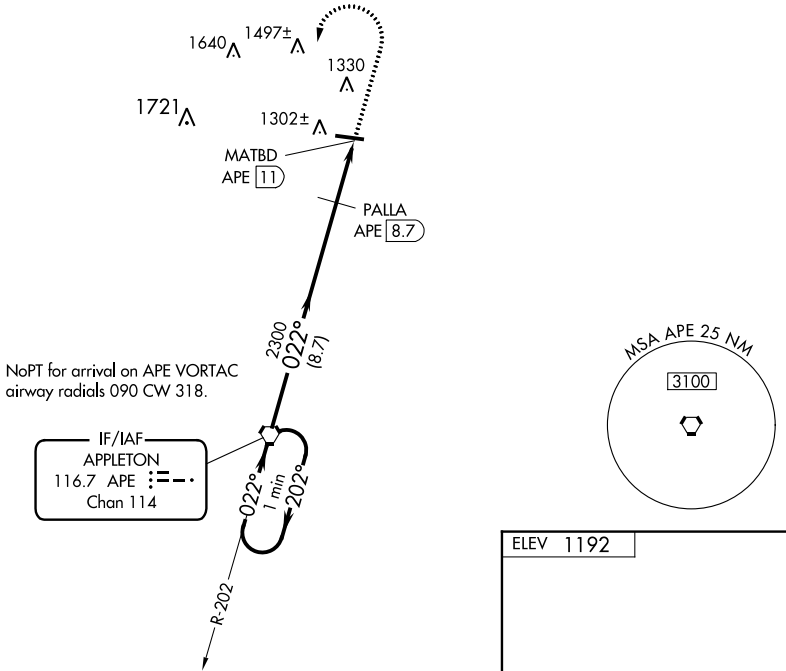


VORTAC APE 116.7 Chan 114	APP CRS 022°	Rwy Idg TDZE Apt Elev 1192	N/A N/A
---	------------------------	---	--------------------------

VOR-A
KNOX COUNTY (4I3)

DME required.		MISSED APPROACH: Climb to 3000 then left turn direct APE VORTAC and hold.	
AWOS-3 126.05	COLUMBUS APP CON 125.95 317.775	CLNC DEL 119.45	UNICOM 123.05 (CTAF) 0



	APE VORTAC				FAF to MAP 2.3 NM					
CATEGORY	A	B	C	D	Knots	60	90	120	150	180
CIRCLING	1660-1 468 (500-1)	1720-1 528 (600-1)	1720-1½ 528 (600-1½)	1860-2 668 (700-2)	Min:Sec	2:18	1:32	1:09	0:55	0:46

EC-2, 08 AUG 2024 to 05 SEP 2024

EC-2, 08 AUG 2024 to 05 SEP 2024