

LOC I-GVQ 108.9	APP CRS 282°	Rwy Idg TDZE Apt Elev	5499 911 914
---------------------------	------------------------	-----------------------------	---

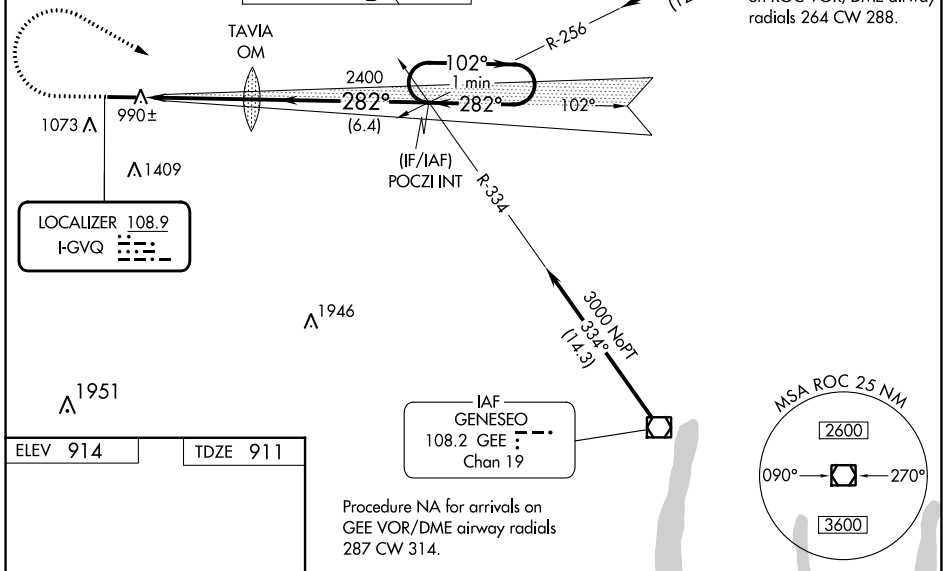
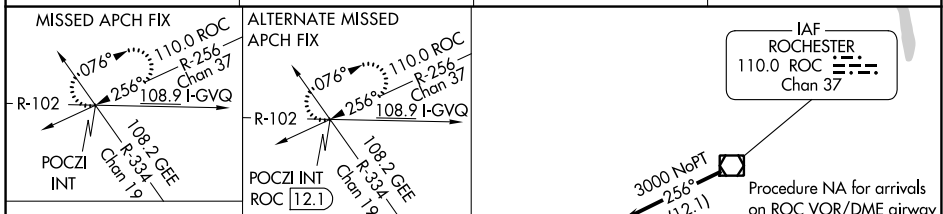
ILS or LOC RWY 28

GENESEE COUNTY (GVQ)

⚠ When local altimeter setting not received, use Rochester altimeter setting: increase DA to 1213 feet; increase all MDA 120 feet and visibility S-LOC 28 Cats C and D ¼ SM and Circling Cats C and D ½ SM. Autopilot coupled approach NA below 1433.

MALS
AS
MISSED APPROACH: Climb to 1500 then climbing right turn to 3000 via heading 130° and I-GVQ east course to POCZI INT and hold.

AWOS-3PT 127.525	ROCHESTER APP CON 123.7 322.3	CLNC DEL 121.8	UNICOM 122.7 (CTAF) 0
----------------------------	---	--------------------------	--



ELEV 914	TDZE 911
REIL Rwy 10 0	
HIRL Rwy 10-28 0	
FAF to MAP 4.2 NM	
Knots	60 90 120 150 180
Min:Sec	4:12 2:48 2:06 1:41 1:24

1500	3000	I-GVQ	POCZI INT	VGSI and ILS glidepath not coincident (VGSI Angle 3.00/TCH 62).	One Minute Holding Pattern
CATEGORY		A	B	C	D
S-ILS 28		1111-½ 200 (200-½)			
S-LOC 28		1260-½ 349 (400-½)			1260-¾ 349 (400-¾)
CIRCLING		1380-1	466 (500-1)	1720-2¼ 806 (900-2¼)	1720-2½ 806 (900-2½)

NE-2, 08 AUG 2024 to 05 SEP 2024

NE-2, 08 AUG 2024 to 05 SEP 2024