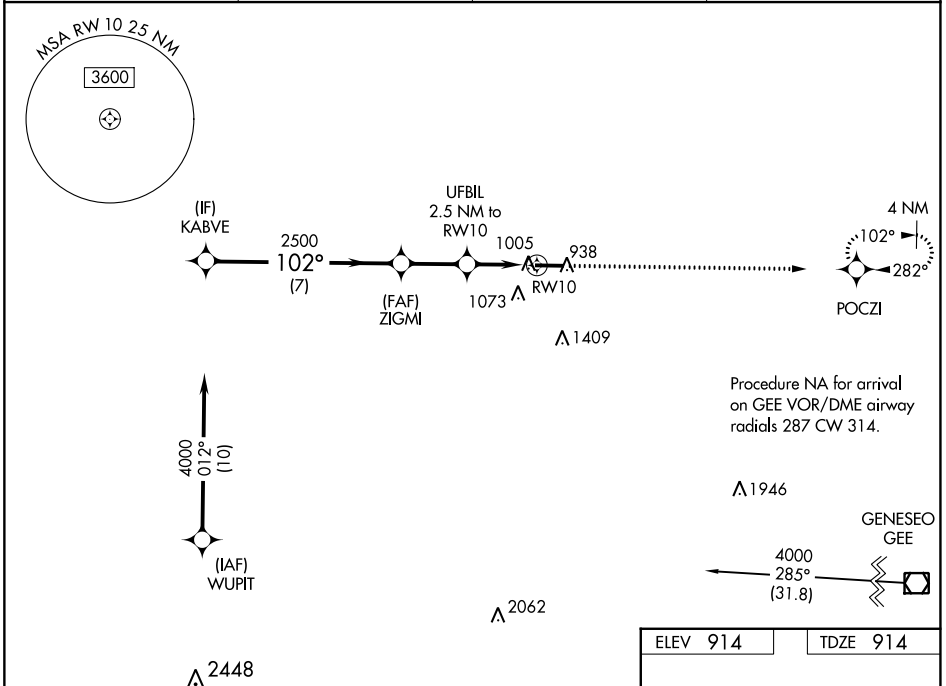


WAAS CH <b>82421</b> <b>W10A</b>	APP CRS <b>102°</b>	Rwy Idg TDZE <b>5499</b> Apt Elev <b>914</b>
--	------------------------	--

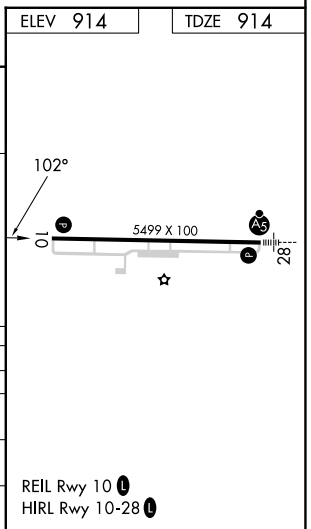
# RNAV (GPS) RWY 10

GENESEE COUNTY (GVQ)

RNP APCH - GPS.			MISSED APPROACH: Climb to 3000 direct POCZI and hold.
For uncompensated Baro-VNAV systems, LNAV/VNAV NA below -16°C or above 54°C.			
AWOS-3PT <b>127.525</b>	ROCHESTER APP CON <b>123.7 322.3</b>	CLNC DEL <b>121.8</b>	UNICOM <b>122.7</b> (CTAF) <b>0</b>



KABVE		ZIGMI		UFBIL 2.5 NM to RWY 10		RWY 10	
4000		2500		1740		3000 POCZI	
GP 3.00° TCH 40		2500		1 NM to RWY 10		1 NM	
7 NM		2.4 NM		1.5 NM		1 NM	
CATEGORY	A	B	C	D			
LPV DA	1114- <sup>3</sup> / <sub>4</sub>		200 (200- <sup>3</sup> / <sub>4</sub> )				
LNAV/VNAV DA	1168- <sup>3</sup> / <sub>4</sub>		254 (300- <sup>3</sup> / <sub>4</sub> )				
LNAV MDA	1260-1		346 (400-1)				
CIRCLING	1380-1	466 (500-1)	1720-2 <sup>1</sup> / <sub>4</sub> 806 (900-2 <sup>1</sup> / <sub>4</sub> )	1720-2 <sup>1</sup> / <sub>2</sub> 806 (900-2 <sup>1</sup> / <sub>2</sub> )			



NE-2, 08 AUG 2024 to 05 SEP 2024

NE-2, 08 AUG 2024 to 05 SEP 2024