

RNAV (GPS) RWY 34

BEND MUNI (BDN)

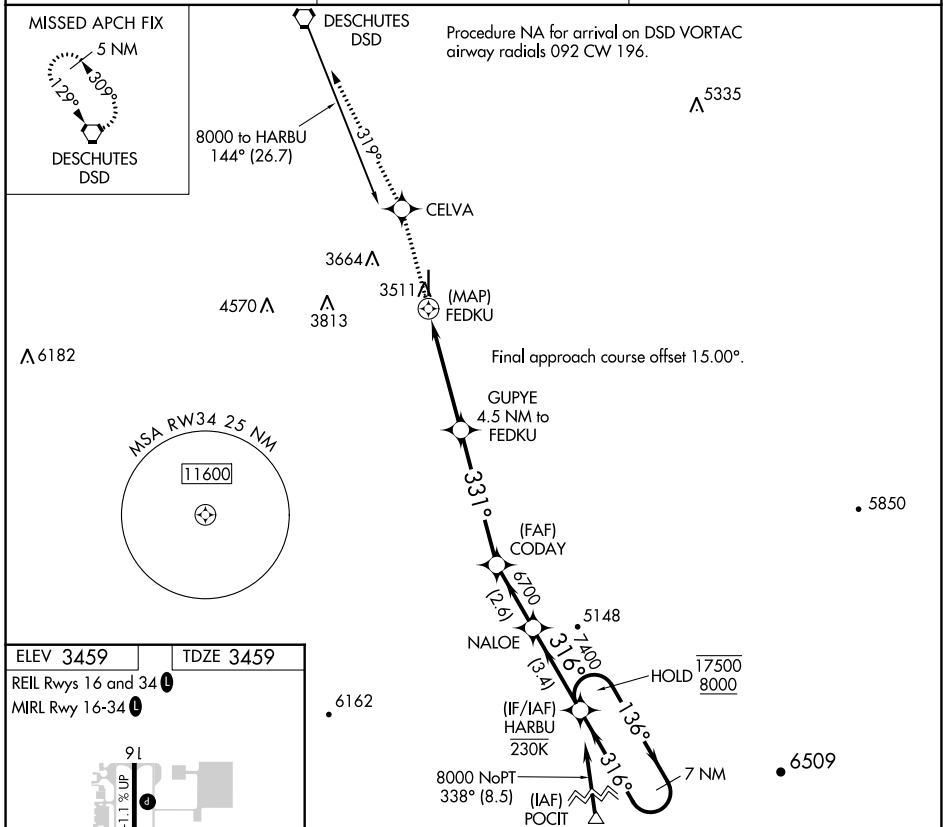
APP CRS 331°	Rwy Idg TDZE Apt Elev	5201 3459 3459
------------------------	-----------------------------	---

RNP APCH - GPS.

▼ Rwy 34 helicopter visibility reduction below $\frac{3}{4}$ SM NA. When local altimeter setting not received, use Redmond altimeter setting and increase all MDAs 100 feet and LNAV visibility Cats B, C, and D $\frac{1}{2}$ SM and Circling visibility Cats A, B, and C $\frac{1}{2}$ SM.

MISSED APPROACH: Climb to 6000 direct CELVA and on track 319° to DSD VORTAC and hold.

AWOS-3 134.425	SEATTLE CENTER 126.15 269.475	UNICOM 123.0 (CTAF) 0
--------------------------	---	---------------------------------



ELEV 3459 TDZE 3459

REIL Rwys 16 and 34

MIRL Rwy 16-34

3507 A

34

331°

6000 CELVA tr 319° DSD VGSJ and descent angles not coincident (VGSJ Angle 3.00/TCH 44).

HARBUR 7 NM Holding Pattern

1.6 NM to FEDKU

4.5 NM to FEDKU

≤ 3.00° TCH 53

31° 316° 316°

5100 6700 7400 17500 8000

0.5 1.6 2.9 NM 5 NM 2.6 NM 3.4 NM

CATEGORY	A	B	C	D
LNAV MDA	4180-1	721 (800-1)	4180-2	721 (800-2)
C CIRCLING	4180-1	721 (800-1)	4180-2	4640-3 721 (800-2) 1181 (1200-3)

NW-1, 08 AUG 2024 to 05 SEP 2024

NW-1, 08 AUG 2024 to 05 SEP 2024