

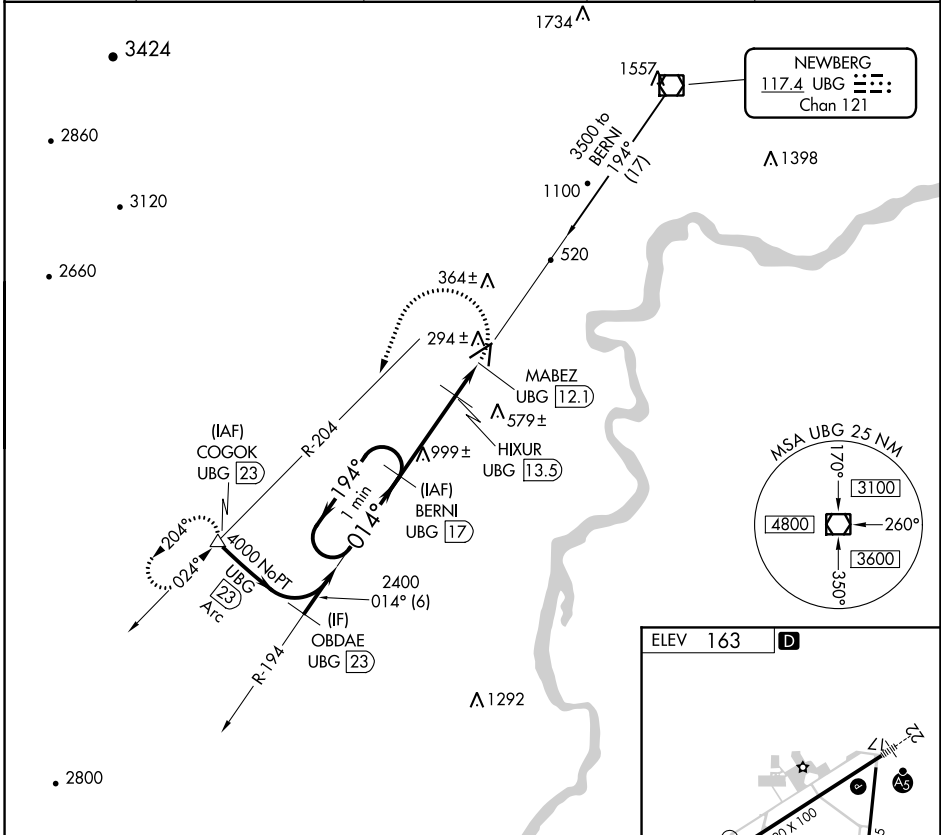
VOR/DME UBG <b>117.4</b> Chan <b>121</b>	APP CRS <b>014°</b>	Rwy Idg TDZE Apt Elev <b>N/A</b> <b>N/A</b> <b>163</b>
--	------------------------	---

VOR/DME-B  
MC MINNVILLE MUNI (MMV)

**⚠** When local altimeter setting not received, use Aurora State altimeter setting; increase all MDA 60 feet and Circling Cat C visibility ¼ SM.

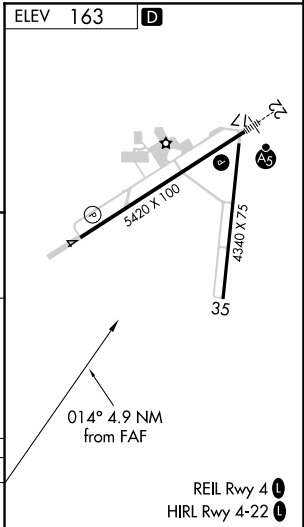
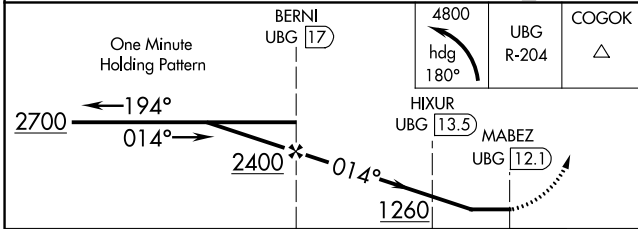
**MISSED APPROACH:** Climbing left turn to 4800 via heading 180° and UBG VOR/DME R-204 to COGOK/UBG 23 DME and hold, continue climb-in-hold to 4800.

ASOS <b>135.675</b>	PORTLAND APP CON <b>126.0 284.6</b> (NORTH)	SEATTLE CENTER <b>125.8 291.7</b> (SOUTH)	CLNC DEL <b>118.35</b>	UNICOM <b>123.0</b> (CTAF) <b>📻</b>
------------------------	--	--	---------------------------	--



NW-1, 08 AUG 2024 to 05 SEP 2024

NW-1, 08 AUG 2024 to 05 SEP 2024



CATEGORY	A	B	C	D
CIRCLING	840-1	677 (700-1)	920-2¼ 757 (800-2¼)	1320-3 1157 (1200-3)