

(TRMML4.TRMML) 24137

# TRMML FOUR DEPARTURE (RNAV)

AL-5642 (FAA)

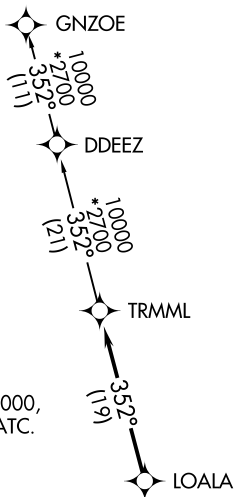
CUSTER (TTF)  
MONROE, MICHIGAN

**TOP ALTITUDE:  
ASSIGNED BY ATC**

RNAV 1 - DME/DME/IRU or GPS.

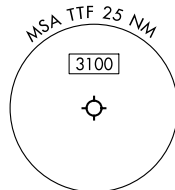
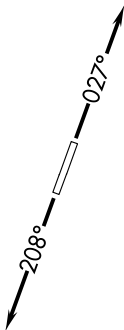
RADAR required.

DETROIT DEP CON  
134.3 284.0  
AWOS-3  
119.075  
CTAF  
122.7



**TAKEOFF MINIMUMS:**  
Rwys 3, 21: Standard.

NOTE: Turbojet departures at/above 10000, maintain 280K until advised by ATC.



NOTE: Chart not to scale.

## DEPARTURE ROUTE DESCRIPTION

TAKEOFF RUNWAY 3: Climb on heading 027° or as assigned by ATC, thence....

TAKEOFF RUNWAY 21: Climb on heading 208° or as assigned by ATC, thence....

....for RADAR vectors to LOALA, then on track 352° to TRMML, then on (transition). Maintain ATC assigned altitude, expect filed altitude 10 minutes after departure.

GNZOE TRANSITION (TRMML4.GNZOE):

EC-1, 08 AUG 2024 to 05 SEP 2024

EC-1, 08 AUG 2024 to 05 SEP 2024

TRMML FOUR DEPARTURE (RNAV)  
(TRMML4.TRMML) 16MAY24

MONROE, MICHIGAN  
CUSTER (TTF)