

APP CRS	Rwy Idg	3602
283°	TDZE	1625
	Apt Elev	1630

RNAV (GPS) RWY 28

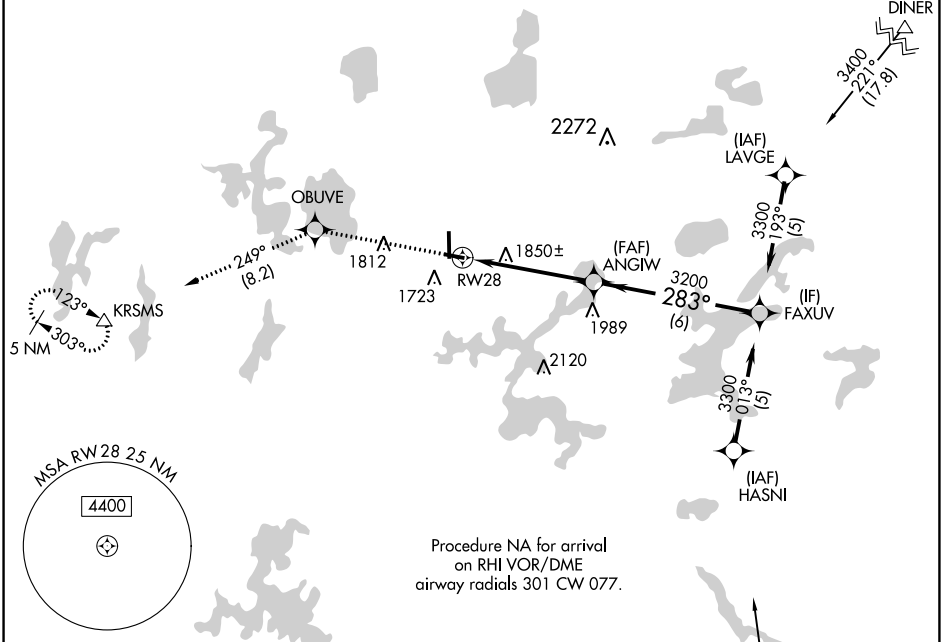
LAKELAND/NOBLE F LEE MEML FLD (A.R.V)

RNP APCH.

▼ Rwy 28 helicopter visibility reduction below 1 SM NA.
 ▲ Straight-in and Circling Rwy 28 NA at night, Circling Rwy 10 NA at night.

MISSED APPROACH: Climb to 6000 direct OBUVE and on track 249° to KRSMS and hold.

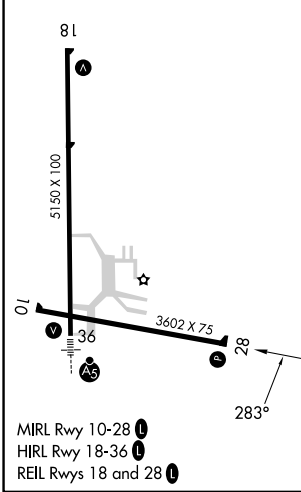
AWOS-3 121.125	MINNEAPOLIS CENTER 133.65 281.5	UNICOM 122.7 (CTAF)
--------------------------	-------------------------------------------	-------------------------------



EC-3, 08 AUG 2024 to 05 SEP 2024

EC-3, 08 AUG 2024 to 05 SEP 2024

ELEV 1630	TDZE 1625
-----------	-----------



6000	OBUVE	KRSMS		
↑	✧	tr 249°	△	
<p>ANGIW</p> <p>FAXUV</p> <p>RWY 28</p> <p>3200</p> <p>3300</p> <p>283°</p> <p>3.04° TCH 37</p> <p>4.8 NM</p> <p>6 NM</p>				
CATEGORY	A	B	C	D
LNAV MDA	2140-1	515 (600-1)	2140-1½ 515 (600-1½)	2140-1¾ 515 (600-1¾)
<input checked="" type="checkbox"/> CIRCLING	2140-1 510 (600-1)	2200-1 570 (600-1)	2200-1½ 570 (600-1½)	2220-2 590 (600-2)