

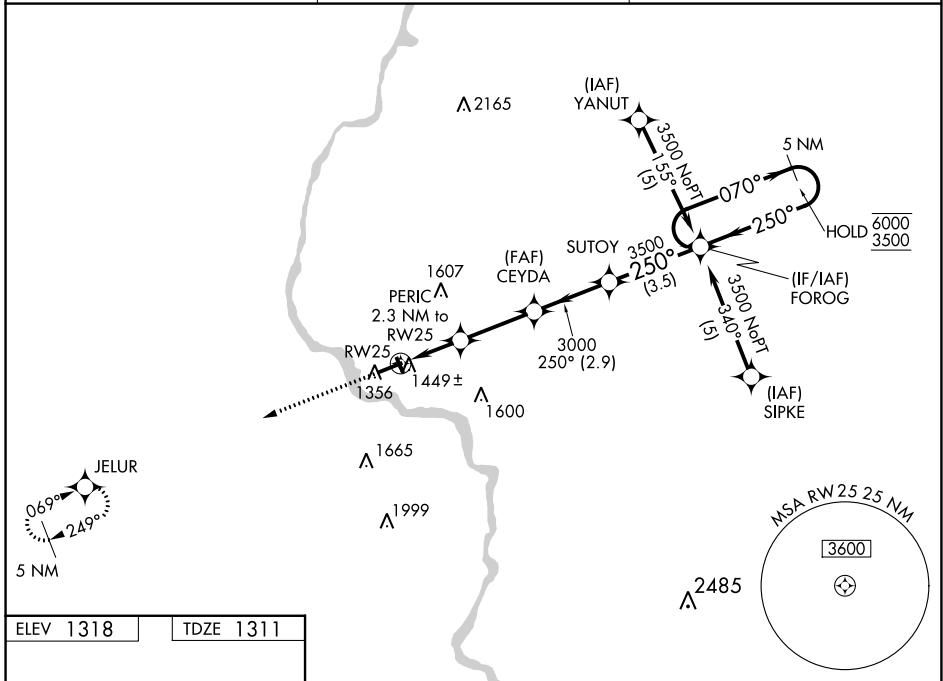
WAAS CH 49104 W25A	APP CRS 250°	Rwy Idg TDZE Apt Elev	5100 1311 1318
--	------------------------	-----------------------------	---

RNAV (GPS) RWY 25

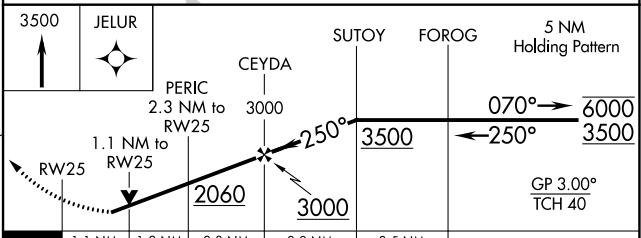
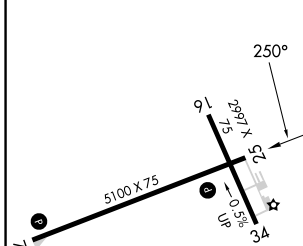
MERRILL MUNI (R.R.L.)

RNP APCH - GPS.	MISSED APPROACH: Climb to 3500 direct JELUR and hold.
<p>⚠ Circling Rwy 16, 34 NA at night. Rwy 25 helicopter visibility reduction below $\frac{3}{4}$ SM NA. For uncompensated Baro-VNAV systems, LNAV/VNAV NA below -17°C or above 54°C.</p>	

AWOS-3 119.925	MINNEAPOLIS CENTER 124.4 317.7	UNICOM 122.8 (CTAF) Ⓛ
--------------------------	--	--



ELEV 1318	TDZE 1311
------------------	------------------



CATEGORY	A	B	C	D
LPV DA	1640-1	329 (400-1)		NA
LNAV/VNAV DA	1719-1 $\frac{1}{8}$	408 (500-1 $\frac{1}{8}$)		NA
LNAV MDA	1700-1	389 (400-1)	1700-1 $\frac{1}{8}$ 389 (400-1 $\frac{1}{8}$)	NA
ⓐ CIRCLING	1760-1 442 (500-1)	1780-1 462 (500-1)	1920-1 $\frac{3}{4}$ 602 (700-1 $\frac{3}{4}$)	NA

EC-3, 08 AUG 2024 to 05 SEP 2024

EC-3, 08 AUG 2024 to 05 SEP 2024