

APP CRS	Rwy Idg	<b>5004</b>
<b>216°</b>	TDZE	<b>717</b>
	Apt Elev	<b>717</b>

# RNAV (GPS) RWY 22

SHARP COUNTY RGNL (CVK)

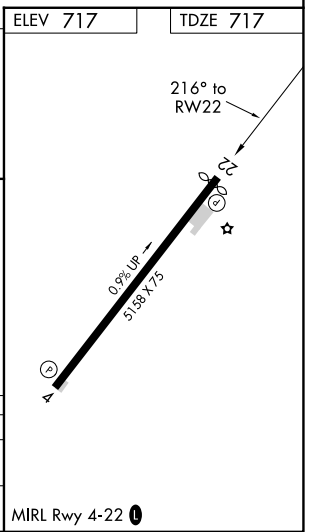
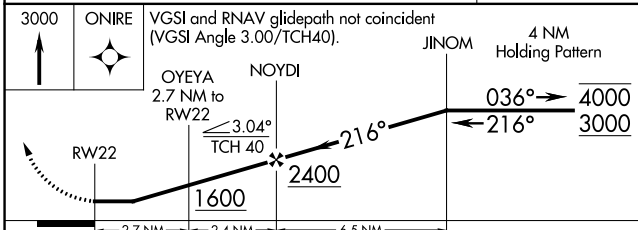
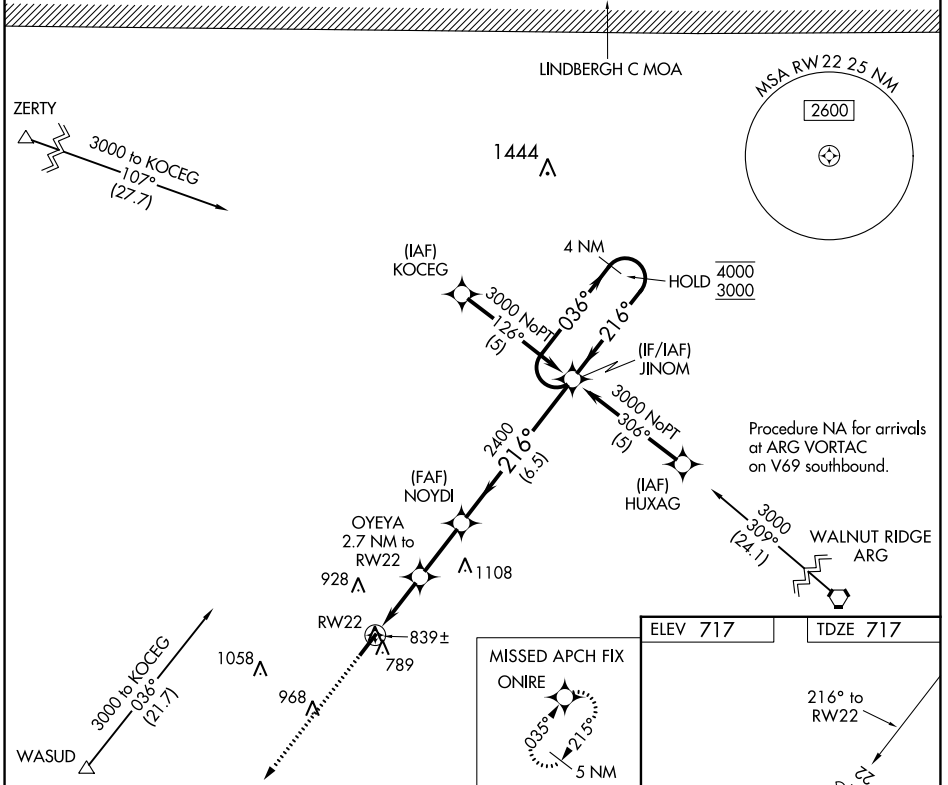
RNP APCH.

**▼** Rwy 22 helicopter visibility reduction below  $\frac{3}{4}$  SM NA. Circling Rwy 4 NA at night. Use Walnut Ridge Rgnl altimeter setting; when not received, use Jonesboro Municipal altimeter setting and increase all MDAs 60 feet, increase LNAV Cat C visibility  $\frac{1}{8}$  SM and Circling Cat C visibility  $\frac{1}{4}$  SM.

**▲** NA

MISSED APPROACH: Climb to 3000 direct ONIRE and hold.

ARG AWOS-3PT <b>126.525</b>	MEMPHIS CENTER <b>120.075 289.4</b>	UNICOM <b>122.7 (CTAF) 0</b>
--------------------------------	--	---------------------------------



CATEGORY	A	B	C	D
LNAV MDA	1360-1	643 (700-1)	1360-1 $\frac{7}{8}$ 643 (700-1 $\frac{7}{8}$ )	NA
CIRCLING	1400-1	683 (700-1)	1420-2 703 (800-2)	NA

SC-1, 08 AUG 2024 to 05 SEP 2024

SC-1, 08 AUG 2024 to 05 SEP 2024