

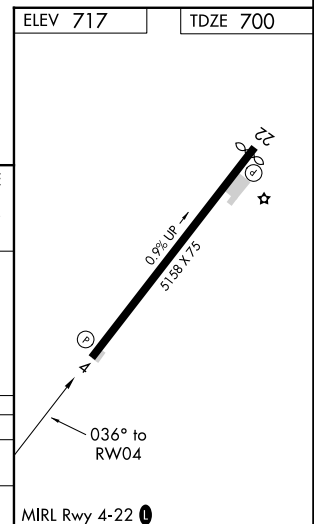
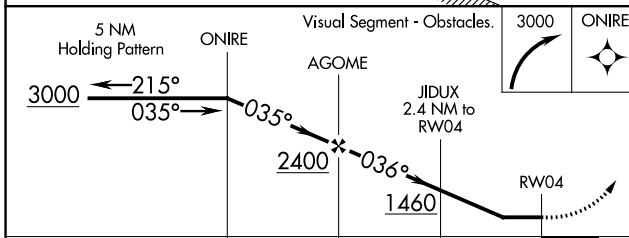
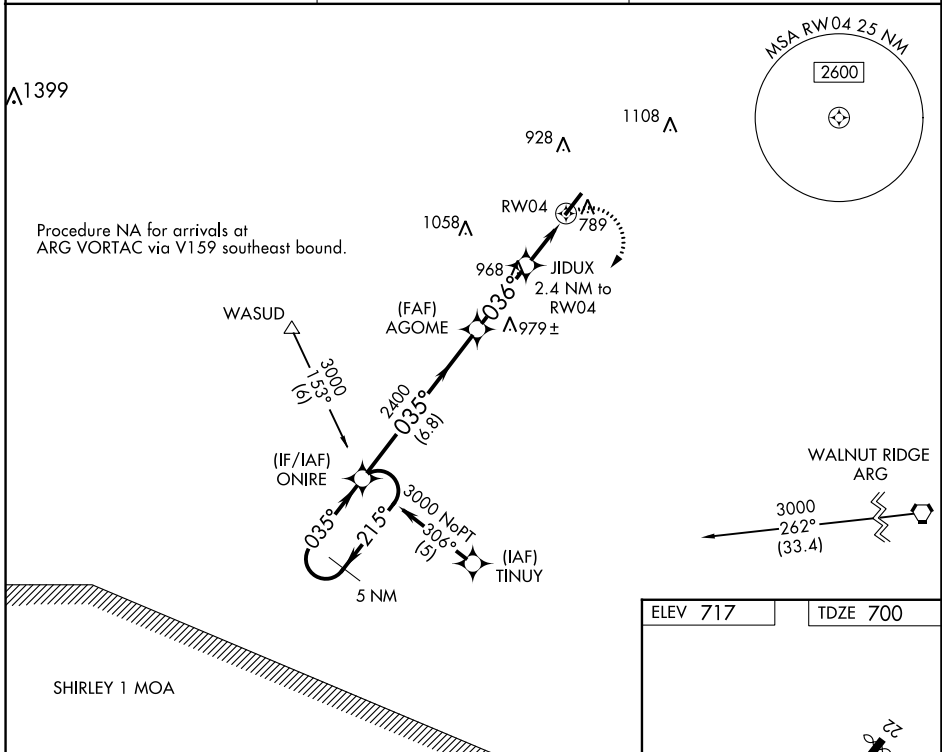
APP CRS	Rwy Idg	5158
036°	TDZE	700
	Apt Elev	717

RNAV (GPS) RWY 4

SHARP COUNTY RGNL (CVK)

RNP APCH.	<p>Use Walnut Ridge altimeter setting; when not received, use Jonesboro Municipal altimeter setting and increase all MDAs 60 feet and Circling Cat C visibility ¼ SM. Rwy 4 helicopter visibility reduction below 1 SM NA. Straight-in Rwy 4 NA at night, Circling Rwy 4 NA at night.</p>	<p>MISSED APPROACH: Climbing right turn to 3000 direct ONIRE and hold.</p>
<p>▼ Use Walnut Ridge altimeter setting; when not received, use Jonesboro Municipal altimeter setting and increase all MDAs 60 feet and Circling Cat C visibility ¼ SM. Rwy 4 helicopter visibility reduction below 1 SM NA. Straight-in Rwy 4 NA at night, Circling Rwy 4 NA at night.</p>		

ARG AWOS-3PT 126.525	MEMPHIS CENTER 120.075 289.4	UNICOM 122.7 (CTAF)
--------------------------------	----------------------------------------	-------------------------------



CATEGORY	A	B	C	D
RNAV MDA	1260-1	560 (600-1)	1260-1½ 560 (600-1½)	NA
CIRCLING	1400-1	683 (700-1)	1420-2 703 (800-2)	NA

SC-1, 08 AUG 2024 to 05 SEP 2024

SC-1, 08 AUG 2024 to 05 SEP 2024