

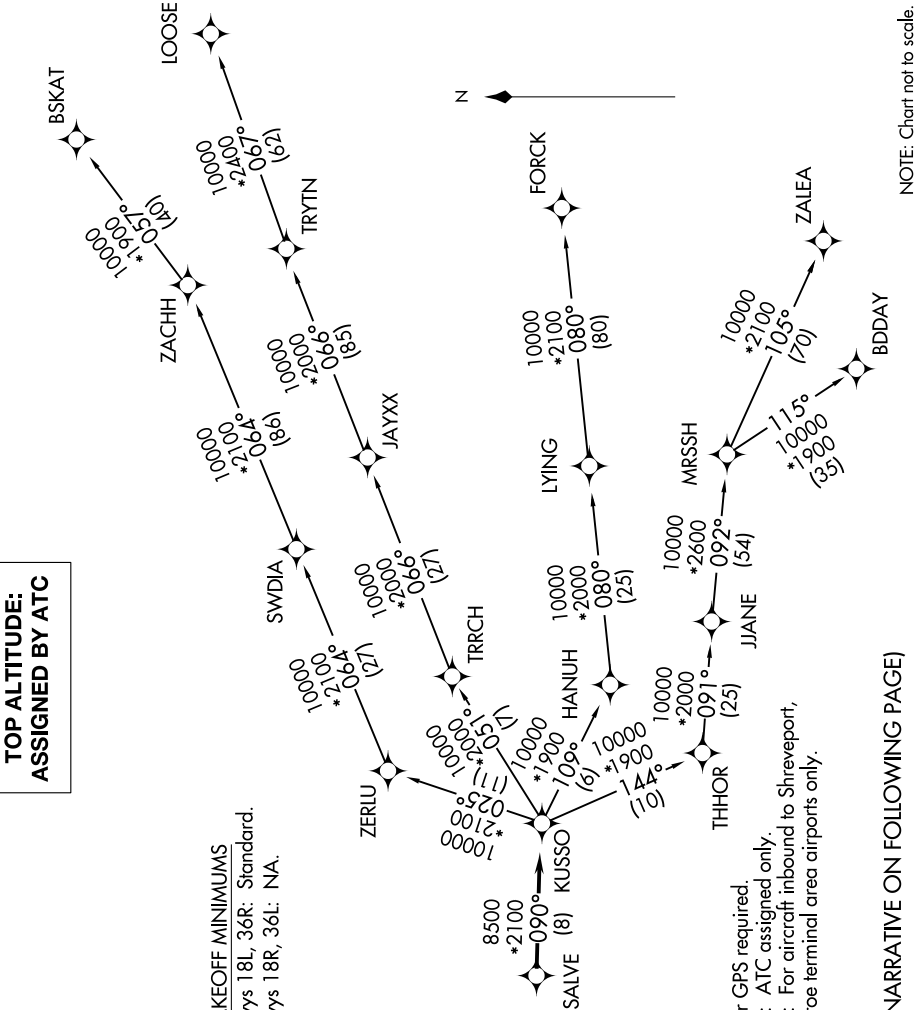
KUSSO ONE DEPARTURE (RNAV)

SC-2, 08 AUG 2024 to 05 SEP 2024

TOP ALTITUDE: ASSIGNED BY ATC

CLNC DEL
 123.95
 GND CON
 123.95
 DENTON TOWER *
 119.95 (CTAF)
 REGIONAL DEP CON
 118.1 306.95

TAKEOFF MINIMUMS
 Rwys 18L, 36R: Standard.
 Rwys 18R, 36L: NA.



NOTE: RADAR required.
 NOTE: RNAV 1.
 NOTE: DME/DME/IRU or GPS required.
 NOTE: BDDAY Transition: ATC assigned only.
 NOTE: MRSSH Transition: For aircraft inbound to Shreveport, Jackson and Monroe terminal area airports only.

(NARRATIVE ON FOLLOWING PAGE)

NOTE: Chart not to scale.

SC-2, 08 AUG 2024 to 05 SEP 2024

KUSSO ONE DEPARTURE (RNAV)