

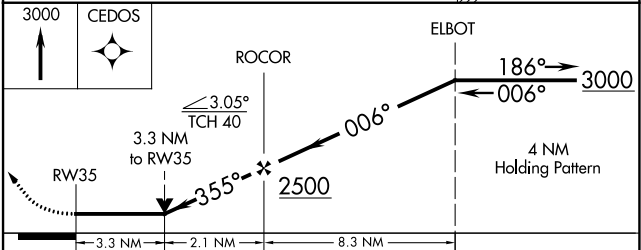
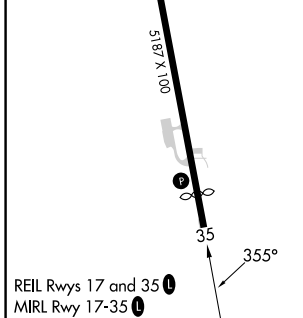
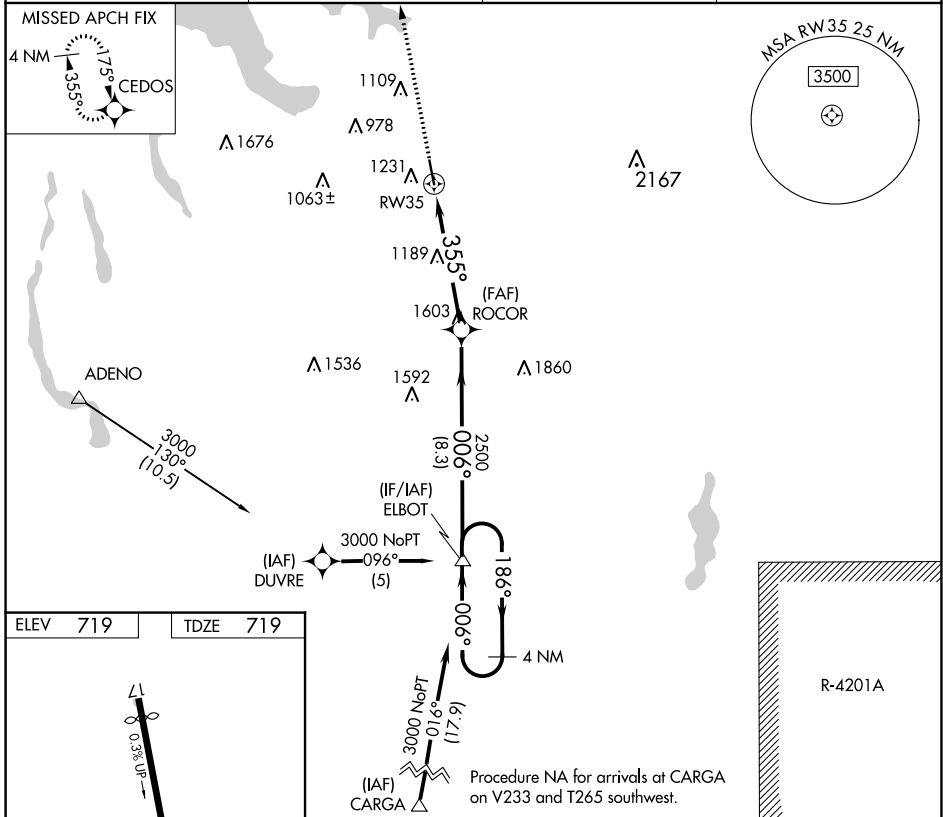
APP CRS	Rwy Idg	<b>4687</b>
<b>355°</b>	TDZE	<b>719</b>
	Apt Elev	<b>719</b>

# RNAV (GPS) RWY 35

BOYNE MOUNTAIN (BFA)

RNP APCH - GPS.	MISSED APPROACH: Climb to 3000 direct CEDOS and hold.
<p>▼ When local altimeter setting not received, use Bellaire altimeter setting.</p> <p>▲ NA Procedure NA at night. Rwy 35 helicopter visibility reduction below 1 SM NA. VDP NA when using Bellaire altimeter setting.</p>	

AWOS-3PT <b>118.675</b>	MINNEAPOLIS CENTER <b>134.6 354.05</b>	UNICOM <b>122.8 (CTAF)</b>	<b>122.85</b>
----------------------------	---	-------------------------------	---------------



CATEGORY	A	B	C	D
LNAV MDA	1840-1¼ 1121 (1200-1¼)	1840-1½ 1121 (1200-1½)	1840-3	1121 (1200-3)

EC-1, 08 AUG 2024 to 05 SEP 2024

EC-1, 08 AUG 2024 to 05 SEP 2024